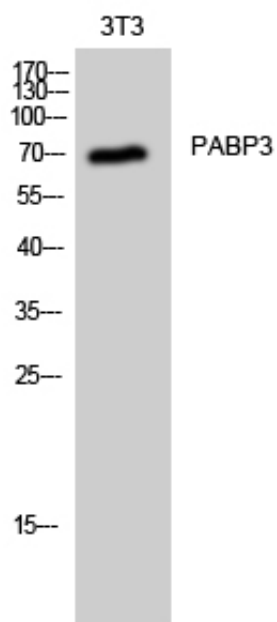


## PABP3 Polyclonal Antibody

Catalog_no :	AT3563
Applications :	WB,IHC-p,ELISA
Reactivity :	Human
Category :	抗原抗体
Size :	100µg/50µg/20µg
Gene_name :	PABPC3
Protein_name :	Polyadenylate-binding protein 3
Humangene_id :	<a href="#">5042</a>
Humanswissprot_no :	<a href="#">Q9H361</a>
Immunogen :	The antiserum was produced against synthesized peptide derived from human PABPC3. AA range:352-401
Specificity :	PABP3 Polyclonal Antibody detects endogenous levels of PABP3 protein.
Formulation :	Liquid in PBS containing 50% glycerol, 0.5% BSA and 0.02% sodium azide.
Source :	Rabbit
Dilution :	Western Blot: 1/500 - 1/2000.IHC-p:1:50-300 ELISA: 1/20000. Not yet tested in other applications.
Purification :	The antibody was affinity-purified from rabbit antiserum by affinity-chromatography using epitope-specific immunogen.
Concentration :	1 mg/ml
Storage_stability :	-20°C/1 year
Msds :	MSDS_Antibody.pdf
Other_name :	PABPC3; PABP3; PABPL3; Polyadenylate-binding protein 3; PABP-3; Poly(A)-binding protein 3; Testis-specific poly(A)-binding protein
Molecular Weight :	70KD

## Product Images



Western Blot analysis of 3T3 cells using PABP3 Polyclonal Antibody