

PAF65α Polyclonal Antibody

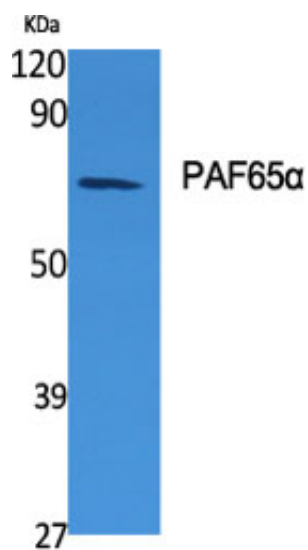
Catalog_no :	<u>AT3565</u>
Applications :	<u>WB,IHC-p,ELISA</u>
Reactivity :	<u>Human,Mouse</u>
Category :	<u>抗原抗体</u>
Size :	<u>100μg/50μg/20μg</u>
Gene_name :	<u>TAF6L</u>
Protein_name :	<u>TAF6-like RNA polymerase II p300/CBP-associated factor-associated factor 65 kDa subunit 6L</u>
Humangene_id :	<u>10629</u>
Humanswissprot_no :	<u>Q9Y6J9</u>
Mousegene_id :	<u>225895</u>
Mouseswissprot_no :	<u>Q8R2K4</u>
Immunogen :	<u>The antiserum was produced against synthesized peptide derived from human TAF6L. AA range:31-80</u>
Specificity :	<u>PAF65α Polyclonal Antibody detects endogenous levels of PAF65α protein.</u>
Formulation :	<u>Liquid in PBS containing 50% glycerol, 0.5% BSA and 0.02% sodium azide.</u>
Source :	<u>Rabbit</u>
Dilution :	<u>Western Blot: 1/500 - 1/2000. Immunohistochemistry: 1/100 - 1/300. ELISA: 1/40000. Not yet tested in other applications.</u>
Purification :	<u>The antibody was affinity-purified from rabbit antiserum by affinity-chromatography using epitope-specific immunogen.</u>
Concentration :	<u>1 mg/ml</u>
Storage_stability :	<u>-20°C/1 year</u>
Msds :	<u>MSDS_Antibody.pdf</u>
Other_name :	<u>TAF6L; PAF65A; TAF6-like RNA polymerase II p300/CBP-associated factor-associated factor 65 kDa subunit 6L; PCAF-associated factor 65-alpha; PAF65-alpha</u>



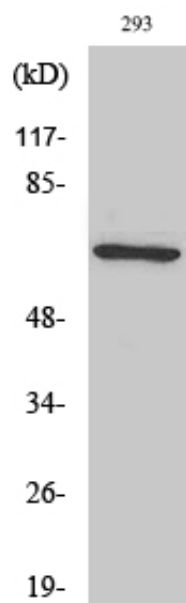
Molecular
Weight :

68KD

Product Images



Western Blot analysis of various cells using PAF65α Polyclonal Antibody diluted at 1 : 1000 cells nucleus extracted by Minute TM Cytoplasmic and Nuclear Fractionation kit (SC-003, Inventbiotech, MN, USA).



Western Blot analysis of 293 cells using PAF65α Polyclonal Antibody diluted at 1 : 1000 cells nucleus extracted by Minute TM Cytoplasmic and Nuclear Fractionation kit (SC-003, Inventbiotech, MN, USA).