

PAI-1 Polyclonal Antibody

Catalog_no :	<u>AT3569</u>
Applications :	<u>WB,IHC-p,ELISA</u>
Reactivity :	<u>Human,Mouse,Rat</u>
Category :	<u>抗原抗体</u>
Size :	<u>100µg/50µg/20µg</u>
Gene_name :	<u>SERPINE1</u>
Protein_name :	<u>Plasminogen activator inhibitor 1</u>
Humangene_id	<u>5054</u>
:	<u></u>
Humanswissprot	<u>P05121</u>
_no :	<u></u>
Mouseswissprot	<u>P22777</u>
_no :	<u></u>
Ratgene_id :	<u>24617</u>
Ratswissprot_no	<u>P20961</u>
:	<u></u>
Immunogen :	<u>The antiserum was produced against synthesized peptide derived from human PAI-1. AA range:266-315</u>
Specificity :	<u>PAI-1 Polyclonal Antibody detects endogenous levels of PAI-1 protein.</u>
Formulation :	<u>Liquid in PBS containing 50% glycerol, 0.5% BSA and 0.02% sodium azide.</u>
Source :	<u>Rabbit</u>
Dilution :	<u>Western Blot: 1/500 - 1/2000. Immunohistochemistry: 1/100 - 1/300. ELISA: 1/20000. Not yet tested in other applications.</u>
Purification :	<u>The antibody was affinity-purified from rabbit antiserum by affinity-chromatography using epitope-specific immunogen.</u>
Concentration :	<u>1 mg/ml</u>
Storage_stability	<u>-20°C/1 year</u>
:	<u></u>
Msds :	<u>MSDS_Antibody.pdf</u>
Other_name :	<u>SERPINE1; PAI1; PLANH1; Plasminogen activator inhibitor 1; PAI; PAI-1; Endothelial</u>

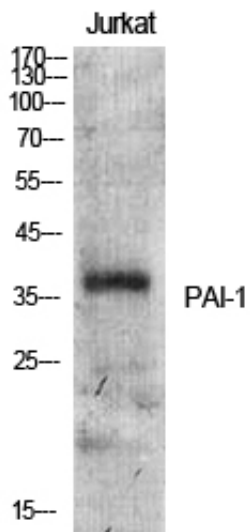


plasminogen activator inhibitor; Serpin E1

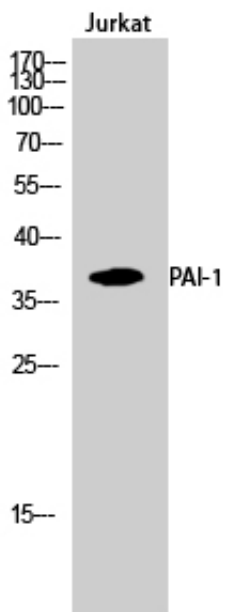
Molecular
Weight :

37KD

Product Images



Western Blot analysis of various cells using PAI-1 Polyclonal Antibody



Western Blot analysis of Jurkat cells using PAI-1 Polyclonal Antibody