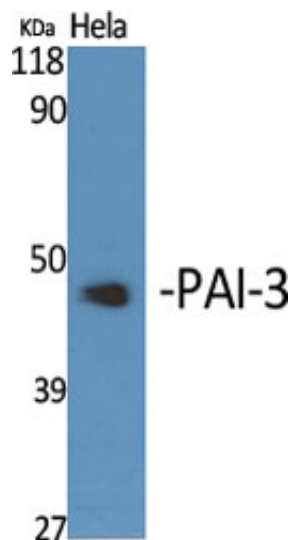


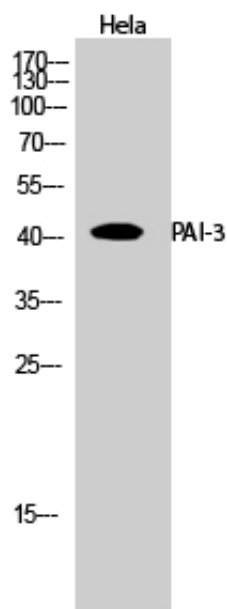
PAI-3 Polyclonal Antibody

Catalog_no :	AT3571
Applications :	WB,IHC-p,ELISA
Reactivity :	Human
Category :	抗原抗体
Size :	100µg/50µg/20µg
Gene_name :	SERPINA5
Protein_name :	Plasma serine protease inhibitor
Humangene_id :	155698
Humanswissprot_no :	P05154
Immunogen :	The antiserum was produced against synthesized peptide derived from human Serpin A5. AA range:260-309
Specificity :	PAI-3 Polyclonal Antibody detects endogenous levels of PAI-3 protein.
Formulation :	Liquid in PBS containing 50% glycerol, 0.5% BSA and 0.02% sodium azide.
Source :	Rabbit
Dilution :	Western Blot: 1/500 - 1/2000. Immunohistochemistry: 1/100 - 1/300. ELISA: 1/20000. Not yet tested in other applications.
Purification :	The antibody was affinity-purified from rabbit antiserum by affinity-chromatography using epitope-specific immunogen.
Concentration :	1 mg/ml
Storage_stability :	-20°C/1 year
Msds :	MSDS_Antibody.pdf
Other_name :	SERPINA5; PCI; PLANH3; Plasma serine protease inhibitor; Acrosomal serine protease inhibitor; Plasminogen activator inhibitor 3; PAI-3; PAI3; Protein C inhibitor; PCI; Serpin A5
Molecular Weight :	42KD

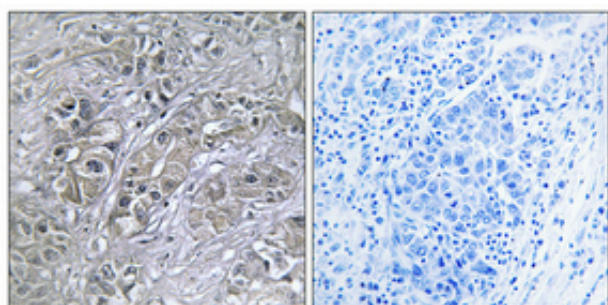
Product Images



Western Blot analysis of various cells using PAI-3 Polyclonal Antibody



Western Blot analysis of HeLa cells using PAI-3 Polyclonal Antibody



Immunohistochemical analysis of paraffin-embedded Human lung cancer. Antibody was diluted at 1:100(4°, overnight). High-pressure and temperature Tris-EDTA, pH8.0 was used for antigen retrieval. Negative control (right) obtained from antibody was pre-absorbed by immunogen peptide.