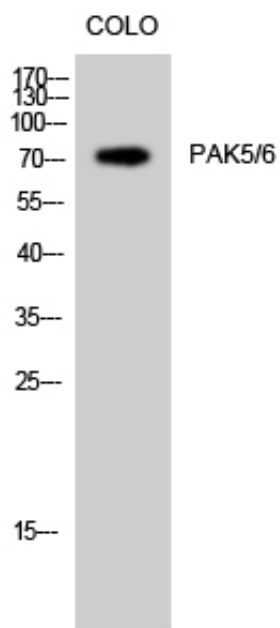


## PAK5/6 Polyclonal Antibody

Catalog_no :	<u>AT3574</u>
Applications :	<u>WB,ELISA</u>
Reactivity :	<u>Human,Mouse</u>
Category :	<u>抗原抗体</u>
Size :	<u>100µg/50µg/20µg</u>
Gene_name :	<u>PAK6/PAK7</u>
Protein_name :	<u>Serine/threonine-protein kinase PAK 6/7</u>
Humangene_id :	<u><a href="#">57144/56924</a></u>
Humanswissprot_no :	<u><a href="#">Q9P286/Q9NQ5</a></u>
Mousegene_id :	<u><a href="#">241656/214230</a></u>
Immunogen :	<u>The antiserum was produced against synthesized peptide derived from human PAK5/6. AA range:566-615</u>
Specificity :	<u>PAK5/6 Polyclonal Antibody detects endogenous levels of PAK5/6 protein.</u>
Formulation :	<u>Liquid in PBS containing 50% glycerol, 0.5% BSA and 0.02% sodium azide.</u>
Source :	<u>Rabbit</u>
Dilution :	<u>Western Blot: 1/500 - 1/2000. ELISA: 1/40000. Not yet tested in other applications.</u>
Purification :	<u>The antibody was affinity-purified from rabbit antiserum by affinity-chromatography using epitope-specific immunogen.</u>
Concentration :	<u>1 mg/ml</u>
Storage_stability :	<u>-20°C/1 year</u>
Msds :	<u>MSDS_Antibody.pdf</u>
Other_name :	<u>PAK7; KIAA1264; PAK5; Serine/threonine-protein kinase PAK 7; p21-activated kinase 5; PAK-5; p21-activated kinase 7; PAK-7; PAK6; PAK5; Serine/threonine-protein kinase PAK 6; PAK-5; p21-activated kinase 6; PAK-6</u>
Molecular Weight :	<u>75KD</u>

## Product Images



Western Blot analysis of COLO cells using PAK5/6 Polyclonal Antibody