

PAK α / β / γ Polyclonal Antibody

Catalog_no :	<u>AT3578</u>
Applications :	<u>WB,IHC-p,ELISA</u>
Reactivity :	<u>Human,Mouse,Rat</u>
Category :	<u>抗原抗体</u>
Size :	<u>100μg/50μg/20μg</u>
Gene_name :	<u>PAK1/PAK2/PAK3</u>
Protein_name :	<u>Serine/threonine-protein kinase PAK 1</u>
Humangene_id :	<u>5058/5062/5063</u>
Humanswissprot_no :	<u>Q13153/Q13177/O75914</u>
Mousegene_id :	<u>224105/18481</u>
Ratgene_id :	<u>29431/100910732/29433</u>
Ratswissprot_no :	<u>P35465/Q64303/Q62829</u>
Immunogen :	<u>The antiserum was produced against synthesized peptide derived from human PAK1/2/3. AA range:391-440</u>
Specificity :	<u>PAKα/β/γ Polyclonal Antibody detects endogenous levels of PAKα/β/γ protein.</u>
Formulation :	<u>Liquid in PBS containing 50% glycerol, 0.5% BSA and 0.02% sodium azide.</u>
Source :	<u>Rabbit</u>
Dilution :	<u>Western Blot: 1/500 - 1/2000. Immunohistochemistry: 1/100 - 1/300. ELISA: 1/20000. Not yet tested in other applications.</u>
Purification :	<u>The antibody was affinity-purified from rabbit antiserum by affinity-chromatography using epitope-specific immunogen.</u>
Concentration :	<u>1 mg/ml</u>
Storage_stability :	<u>-20°C/1 year</u>
Msds :	<u>MSDS_Antibody.pdf</u>
Other_name :	<u>PAK1; Serine/threonine-protein kinase PAK 1; Alpha-PAK; p21-activated kinase 1; PAK-1; p65-PAK; PAK2; Serine/threonine-protein kinase PAK 2; Gamma-PAK; PAK65; S6/H4</u>

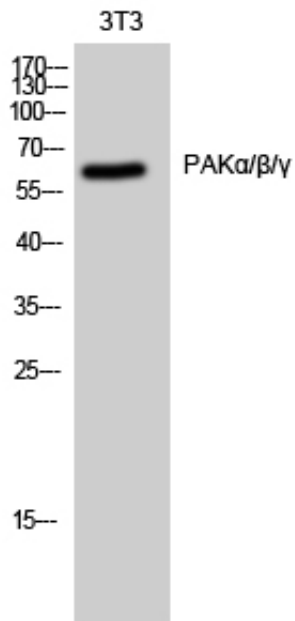


kinase; p21-activated kinase 2; PAK-2; p58; PAK3; OPHN3; Serine/threonine-p

Molecular
Weight :

62KD

Product Images



Western Blot analysis of 3T3 cells using PAKα/β/γ Polyclonal Antibody