

PAKy Polyclonal Antibody

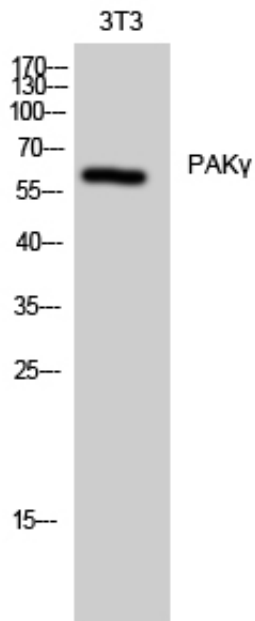
Catalog_no :	<u>AT3581</u>
Applications :	<u>WB,IHC-p,ELISA</u>
Reactivity :	<u>Human,Mouse,Rat</u>
Category :	<u>抗原抗体</u>
Size :	<u>100µg/50µg/20µg</u>
Gene_name :	<u>PAK2</u>
Protein_name :	<u>Serine/threonine-protein kinase PAK 2</u>
Humangene_id	<u>5062</u>
:	<u></u>
Humanswissprot	<u>Q13177</u>
_no :	<u></u>
Mousegene_id :	<u>224105</u>
Mouseswissprot	<u>Q8CIN4</u>
_no :	<u></u>
Ratgene_id :	<u>1.00911e+008</u>
Ratswissprot_no	<u>Q64303</u>
:	<u></u>
Immunogen :	<u>The antiserum was produced against synthesized peptide derived from human PAK2. AA range:5-54</u>
Specificity :	<u>PAKy Polyclonal Antibody detects endogenous levels of PAKy protein.</u>
Formulation :	<u>Liquid in PBS containing 50% glycerol, 0.5% BSA and 0.02% sodium azide.</u>
Source :	<u>Rabbit</u>
Dilution :	<u>Western Blot: 1/500 - 1/2000. Immunohistochemistry: 1/100 - 1/300. ELISA: 1/5000. Not yet tested in other applications.</u>
Purification :	<u>The antibody was affinity-purified from rabbit antiserum by affinity-chromatography using epitope-specific immunogen.</u>
Concentration :	<u>1 mg/ml</u>
Storage_stability	<u>-20°C/1 year</u>
:	<u></u>
Msds :	<u>MSDS_Antibody.pdf</u>



Other_name : PAK2; Serine/threonine-protein kinase PAK 2; Gamma-PAK; PAK65; S6/H4 kinase; p21-activated kinase 2; PAK-2; p58

Molecular Weight : 60KD

Product Images



Western Blot analysis of 3T3 cells using PAKy Polyclonal Antibody