

PAR4 Polyclonal Antibody

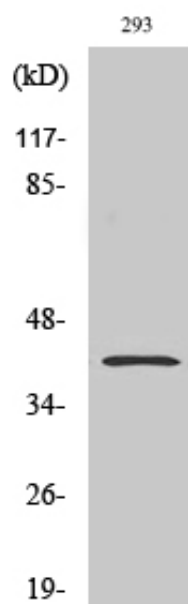
Catalog_no :	AT3587
Applications :	WB,IHC-p,ELISA
Reactivity :	Human,Mouse,Rat
Category :	抗原抗体
Size :	100µg/50µg/20µg
Gene_name :	PAWR
Protein_name :	PRKC apoptosis WT1 regulator protein
Humangene_id :	5074
Humanswissprot_no :	Q96I70
Mousegene_id :	114774
Mouseswissprot_no :	Q925B0
Ratgene_id :	64513
Ratswissprot_no :	Q62627
Immunogen :	The antiserum was produced against synthesized peptide derived from human Prostate Apoptosis Response protein-4. AA range:291-340
Specificity :	PAR4 Polyclonal Antibody detects endogenous levels of PAR4 protein.
Formulation :	Liquid in PBS containing 50% glycerol, 0.5% BSA and 0.02% sodium azide.
Source :	Rabbit
Dilution :	Western Blot: 1/500 - 1/2000. Immunohistochemistry: 1/100 - 1/300. ELISA: 1/10000. Not yet tested in other applications.
Purification :	The antibody was affinity-purified from rabbit antiserum by affinity-chromatography using epitope-specific immunogen.
Concentration :	1 mg/ml
Storage_stability :	-20°C/1 year
Msds :	MSDS_Antibody.pdf



Other_name : PAWR; PAR4; PRKC apoptosis WT1 regulator protein; Prostate apoptosis response 4 protein; Par-4

Molecular Weight : 36KD

Product Images



Western Blot analysis of various cells using PAR4 Polyclonal Antibody