

PAR-4 Polyclonal Antibody

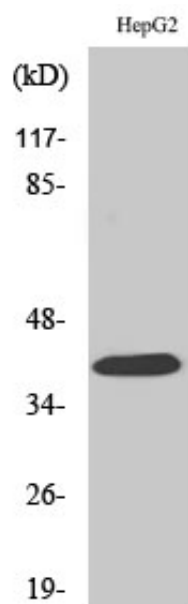
Catalog_no :	AT3588
Applications :	WB,IF,ELISA
Reactivity :	Human,Mouse,Rat
Category :	抗原抗体
Size :	100µg/50µg/20µg
Gene_name :	F2RL3
Protein_name :	Proteinase-activated receptor 4
Humangene_id :	9002
Humanswissprot_no :	Q96RI0
Mousegene_id :	14065
Mouseswissprot_no :	O88634
Ratgene_id :	116498
Ratswissprot_no :	Q920E0
Immunogen :	The antiserum was produced against synthesized peptide derived from human PAR4. AA range:29-78
Specificity :	PAR-4 Polyclonal Antibody detects endogenous levels of PAR-4 protein.
Formulation :	Liquid in PBS containing 50% glycerol, 0.5% BSA and 0.02% sodium azide.
Source :	Rabbit
Dilution :	Western Blot: 1/500 - 1/2000. Immunofluorescence: 1/200 - 1/1000. ELISA: 1/10000. Not yet tested in other applications.
Purification :	The antibody was affinity-purified from rabbit antiserum by affinity-chromatography using epitope-specific immunogen.
Concentration :	1 mg/ml
Storage_stability :	-20°C/1 year
Msds :	MSDS_Antibody.pdf



Other_name : F2RL3; PAR4; Proteinase-activated receptor 4; PAR-4; Coagulation factor II receptor-like 3; Thrombin receptor-like 3

Molecular Weight : 41KD

Product Images



Western Blot analysis of various cells using PAR-4 Polyclonal Antibody