

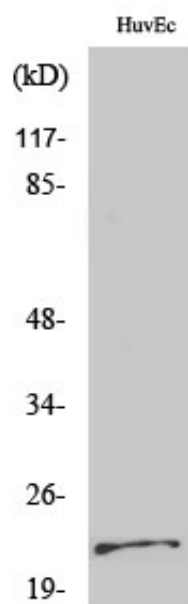
PARK7 Polyclonal Antibody

Catalog_no :	AT3592
Applications :	WB,IHC-p,IF,ELISA
Reactivity :	Human,Mouse
Category :	抗原抗体
Size :	100µg/50µg/20µg
Gene_name :	PARK7
Protein_name :	Protein DJ-1
Humangene_id :	11315
Humanswissprot_no :	Q99497
Mousegene_id :	57320
Mouseswissprot_no :	Q99LX0
Immunogen :	The antiserum was produced against synthesized peptide derived from human DJ-1. AA range:21-70
Specificity :	PARK7 Polyclonal Antibody detects endogenous levels of PARK7 protein.
Formulation :	Liquid in PBS containing 50% glycerol, 0.5% BSA and 0.02% sodium azide.
Source :	Rabbit
Dilution :	Western Blot: 1/500 - 1/2000. Immunohistochemistry: 1/100 - 1/300. Immunofluorescence: 1/200 - 1/1000. ELISA: 1/10000. Not yet tested in other applications.
Purification :	The antibody was affinity-purified from rabbit antiserum by affinity-chromatography using epitope-specific immunogen.
Concentration :	1 mg/ml
Storage_stability :	-20°C/1 year
Msds :	MSDS_Antibody.pdf
Other_name :	PARK7; Protein DJ-1; Oncogene DJ1; Parkinson disease protein 7
Molecular	22KD



Weight :

Product Images



Western Blot analysis of various cells using PARK7 Polyclonal Antibody