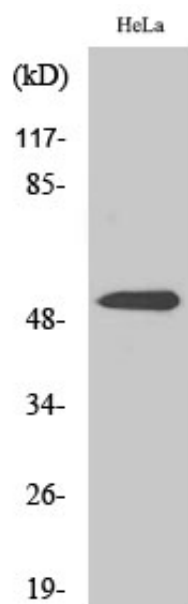


Parkin Polyclonal Antibody

| | |
|---------------------|--|
| Catalog_no : | AT3593 |
| Applications : | WB,IHC-p,ELISA |
| Reactivity : | Human |
| Category : | 抗原抗体 |
| Size : | 100µg/50µg/20µg |
| Gene_name : | PARK2 |
| Protein_name : | E3 ubiquitin-protein ligase parkin |
| Humangene_id : | 5071 |
| Humanswissprot_no : | O60260 |
| Immunogen : | The antiserum was produced against synthesized peptide derived from human Parkin. AA range:101-150 |
| Specificity : | Parkin Polyclonal Antibody detects endogenous levels of Parkin protein. |
| Formulation : | Liquid in PBS containing 50% glycerol, 0.5% BSA and 0.02% sodium azide. |
| Source : | Rabbit |
| Dilution : | Western Blot: 1/500 - 1/2000. Immunohistochemistry: 1/100 - 1/300. ELISA: 1/10000. Not yet tested in other applications. |
| Purification : | The antibody was affinity-purified from rabbit antiserum by affinity-chromatography using epitope-specific immunogen. |
| Concentration : | 1 mg/ml |
| Storage_stability : | -20°C/1 year |
| Msds : | MSDS_Antibody.pdf |
| Other_name : | PARK2; PRKN; E3 ubiquitin-protein ligase parkin; Parkinson juvenile disease protein 2; Parkinson disease protein 2 |
| Molecular Weight : | 55KD |

Product Images



Western Blot analysis of various cells using Parkin Polyclonal Antibody