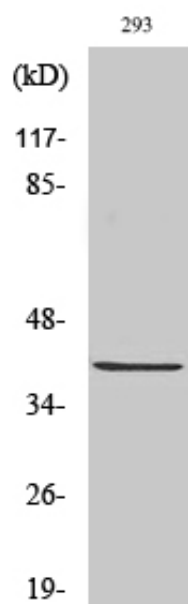




Pax-5 Polyclonal Antibody

Catalog_no :	AT3601
Applications :	WB,ELISA
Reactivity :	Human,Mouse
Category :	抗原抗体
Size :	100µg/50µg/20µg
Gene_name :	PAX5
Protein_name :	Paired box protein Pax-5
Humangene_id :	5079
Humanswissprot_no :	Q02548
Mousegene_id :	18507
Mouseswissprot_no :	Q02650
Immunogen :	The antiserum was produced against synthesized peptide derived from human Pax-5. AA range:1-50
Specificity :	Pax-5 Polyclonal Antibody detects endogenous levels of Pax-5 protein.
Formulation :	Liquid in PBS containing 50% glycerol, 0.5% BSA and 0.02% sodium azide.
Source :	Rabbit
Dilution :	Western Blot: 1/500 - 1/2000. ELISA: 1/40000. Not yet tested in other applications.
Purification :	The antibody was affinity-purified from rabbit antiserum by affinity-chromatography using epitope-specific immunogen.
Concentration :	1 mg/ml
Storage_stability :	-20°C/1 year
Msds :	MSDS_Antibody.pdf
Other_name :	PAX5; Paired box protein Pax-5; B-cell-specific transcription factor; BSAP
Molecular Weight :	40KD

Product Images



Western Blot analysis of various cells using Pax-5 Polyclonal Antibody cells nucleus extracted by Minute TM Cytoplasmic and Nuclear Fractionation kit (SC-003, Inventbiotech, MN, USA).