

## Pax-8 Polyclonal Antibody

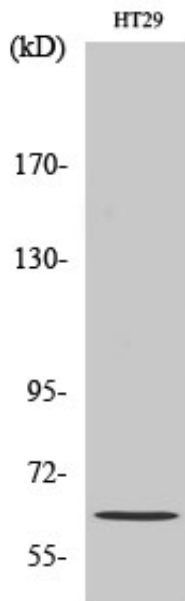
Catalog_no :	AT3602
Applications :	WB,IHC-p,ELISA
Reactivity :	Human,Mouse,Rat
Category :	抗原抗体
Size :	100µg/50µg/20µg
Gene_name :	PAX8
Protein_name :	Paired box protein Pax-8
Humangene_id :	<a href="#">7849</a>
Humanswissprot_no :	<a href="#">Q06710</a>
Mousegene_id :	<a href="#">18510</a>
Mouseswissprot_no :	<a href="#">Q00288</a>
Ratgene_id :	<a href="#">81819</a>
Ratswissprot_no :	<a href="#">P51974</a>
Immunogen :	The antiserum was produced against synthesized peptide derived from human Pax-8. AA range:145-194
Specificity :	Pax-8 Polyclonal Antibody detects endogenous levels of Pax-8 protein.
Formulation :	Liquid in PBS containing 50% glycerol, 0.5% BSA and 0.02% sodium azide.
Source :	Rabbit
Dilution :	Western Blot: 1/500 - 1/2000. Immunohistochemistry: 1/100 - 1/300. ELISA: 1/10000. Not yet tested in other applications.
Purification :	The antibody was affinity-purified from rabbit antiserum by affinity-chromatography using epitope-specific immunogen.
Concentration :	1 mg/ml
Storage_stability :	-20°C/1 year
Msds :	MSDS_Antibody.pdf



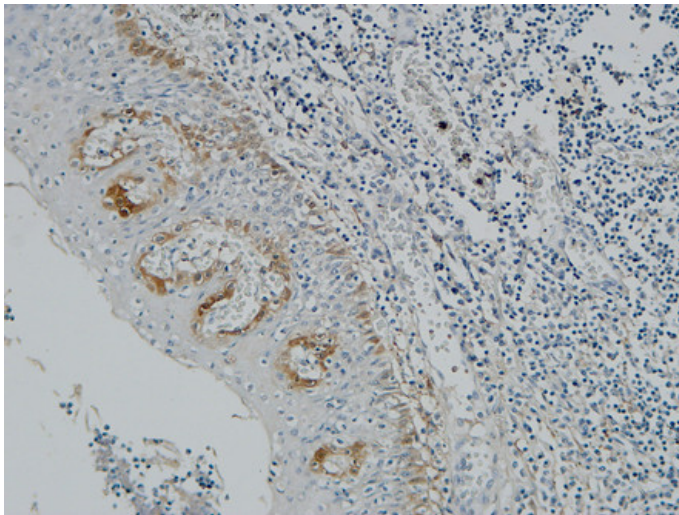
Other\_name : PAX8; Paired box protein Pax-8

Molecular Weight : 62KD

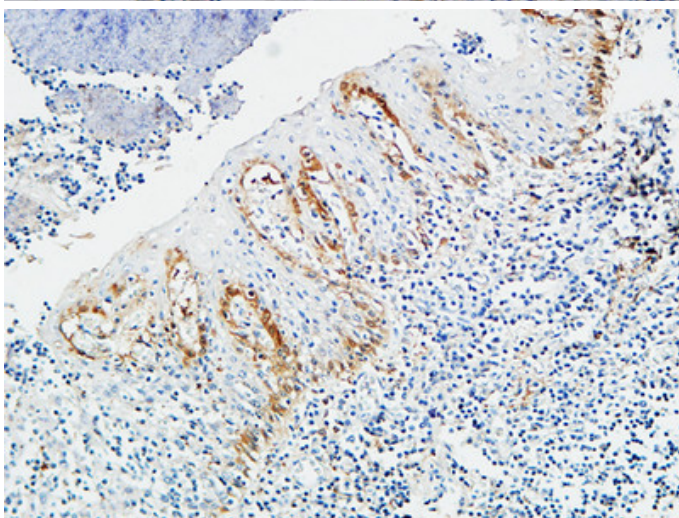
## Product Images



Western Blot analysis of various cells using Pax-8 Polyclonal Antibody cells nucleus extracted by Minute TM Cytoplasmic and Nuclear Fractionation kit (SC-003, Inventbiotech, MN, USA).

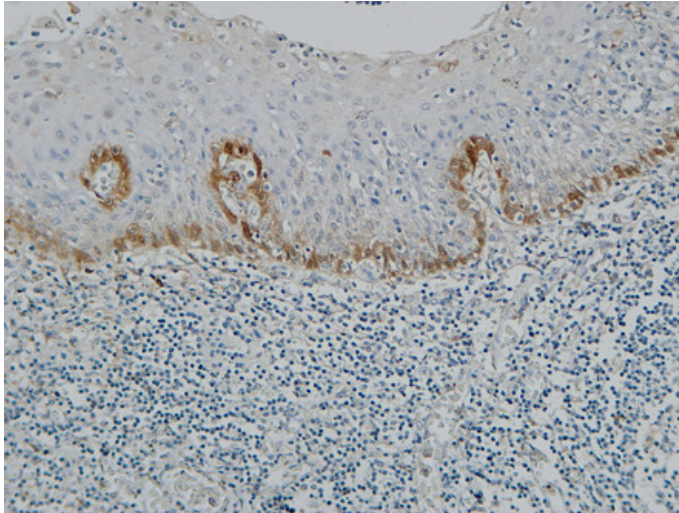


Immunohistochemical analysis of paraffin-embedded Human Amygdala. 1, Antibody was diluted at 1:100(4°, overnight). 2, High-pressure and temperature EDTA, pH8.0 was used for antigen retrieval. 3, Secondary antibody was diluted at 1:200(room temperature, 30min).



Immunohistochemical analysis of paraffin-embedded Human Amygdala. 1, Antibody was diluted at 1:100(4°, overnight). 2, High-pressure and temperature EDTA, pH8.0 was used for antigen retrieval. 3, Secondary antibody was diluted at 1:200(room temperature, 30min).

Immunohistochemical analysis of paraffin-embedded Human Amygdala. 1, Antibody was diluted at



1:100(4°,overnight). 2, High-pressure and temperature EDTA, pH8.0 was used for antigen retrieval. 3,Secondary antibody was diluted at 1:200(room temperature, 30min).