

Pax-9 Polyclonal Antibody

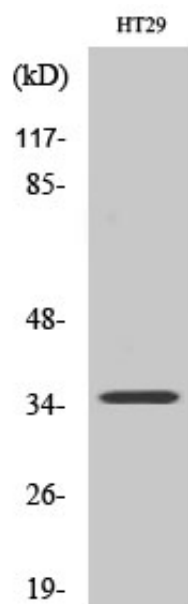
Catalog_no :	AT3603
Applications :	WB,ELISA
Reactivity :	Human,Mouse,Rat
Category :	抗原抗体
Size :	100µg/50µg/20µg
Gene_name :	PAX9
Protein_name :	Paired box protein Pax-9
Humangene_id :	5083
Humanswissprot_no :	P55771
Mousegene_id :	18511
Mouseswissprot_no :	P47242
Ratgene_id :	362741
Ratswissprot_no :	Q2L4T2
Immunogen :	The antiserum was produced against synthesized peptide derived from human Pax-9. AA range:158-207
Specificity :	Pax-9 Polyclonal Antibody detects endogenous levels of Pax-9 protein.
Formulation :	Liquid in PBS containing 50% glycerol, 0.5% BSA and 0.02% sodium azide.
Source :	Rabbit
Dilution :	Western Blot: 1/500 - 1/2000. ELISA: 1/20000. Not yet tested in other applications.
Purification :	The antibody was affinity-purified from rabbit antiserum by affinity-chromatography using epitope-specific immunogen.
Concentration :	1 mg/ml
Storage_stability :	-20°C/1 year
Msds :	MSDS_Antibody.pdf



Other_name : PAX9; Paired box protein Pax-9

Molecular Weight : 35KD

Product Images



Western Blot analysis of various cells using Pax-9 Polyclonal Antibody cells nucleus extracted by Minute TM Cytoplasmic and Nuclear Fractionation kit (SC-003, Invent biotech, MN, USA).