

PBFE Polyclonal Antibody

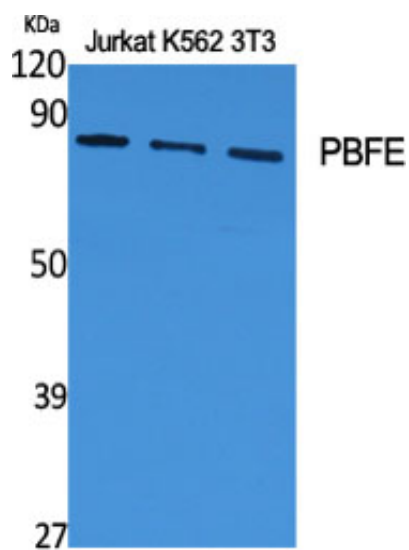
Catalog_no :	AT3610
Applications :	WB,IHC-p,ELISA
Reactivity :	Human,Rat
Category :	抗原抗体
Size :	100µg/50µg/20µg
Gene_name :	EHHADH
Protein_name :	Peroxisomal bifunctional enzyme
Humangene_id	1962
:	
Humanswissprot	Q08426
_no :	
Ratgene_id :	171142
Ratswissprot_no	P07896
:	
Immunogen :	The antiserum was produced against synthesized peptide derived from human EHHADH. AA range:476-525
Specificity :	PBFE Polyclonal Antibody detects endogenous levels of PBFE protein.
Formulation :	Liquid in PBS containing 50% glycerol, 0.5% BSA and 0.02% sodium azide.
Source :	Rabbit
Dilution :	Western Blot: 1/500 - 1/2000. Immunohistochemistry: 1/100 - 1/300. ELISA: 1/10000. Not yet tested in other applications.
Purification :	The antibody was affinity-purified from rabbit antiserum by affinity-chromatography using epitope-specific immunogen.
Concentration :	1 mg/ml
Storage_stability	-20°C/1 year
:	
Msds :	MSDS_Antibody.pdf
Other_name :	EHHADH; ECHD; Peroxisomal bifunctional enzyme; PBE; PBFE
Molecular Weight :	80KD



专注二抗产品

Biodragon旗下品牌

Product Images



Western Blot analysis of various cells using PBFE Polyclonal Antibody



Western Blot analysis of A549 cells using PBFE Polyclonal Antibody