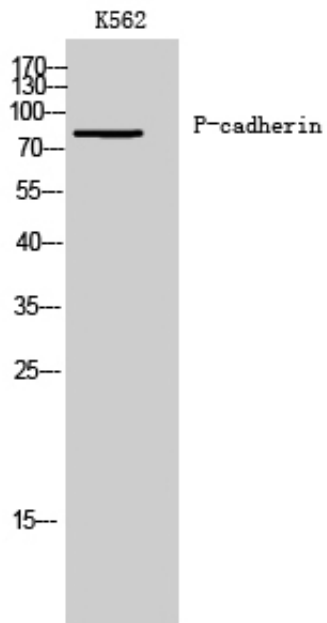




P-cadherin Polyclonal Antibody

Catalog_no :	AT3614
Applications :	WB,IHC-p,ELISA
Reactivity :	Human
Category :	抗原抗体
Size :	100µg/50µg/20µg
Gene_name :	CDH3
Protein_name :	Cadherin-3
Humangene_id :	1001
Humanswissprot_no :	P22223
Immunogen :	The antiserum was produced against synthesized peptide derived from human CDH3. AA range:51-100
Specificity :	P-cadherin Polyclonal Antibody detects endogenous levels of P-cadherin protein.
Formulation :	Liquid in PBS containing 50% glycerol, 0.5% BSA and 0.02% sodium azide.
Source :	Rabbit
Dilution :	Western Blot: 1/500 - 1/2000. Immunohistochemistry: 1/100 - 1/300. ELISA: 1/10000. Not yet tested in other applications.
Purification :	The antibody was affinity-purified from rabbit antiserum by affinity-chromatography using epitope-specific immunogen.
Concentration :	1 mg/ml
Storage_stability :	-20°C/1 year
Msds :	MSDS_Antibody.pdf
Other_name :	CDH3; CDHP; Cadherin-3; Placental cadherin; P-cadherin
Molecular Weight :	86KD

Product Images



Western Blot analysis of K562 cells using P-cadherin Polyclonal Antibody