



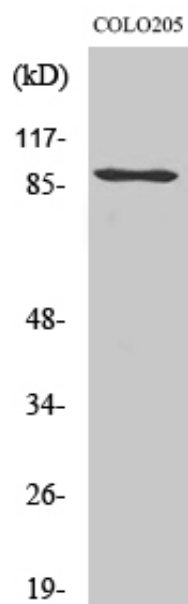
PCAF Polyclonal Antibody

Catalog_no :	<u>AT3615</u>
Applications :	<u>WB,IHC-p,ELISA</u>
Reactivity :	<u>Human,Mouse,Rat</u>
Category :	<u>抗原抗体</u>
Size :	<u>100µg/50µg/20µg</u>
Gene_name :	<u>KAT2B</u>
Protein_name :	<u>Histone acetyltransferase KAT2B</u>
Humangene_id :	<u>8850</u>
Humanswissprot_no :	<u>Q92831</u>
Mousegene_id :	<u>18519</u>
Mouseswissprot_no :	<u>Q9JHD1</u>
Immunogen :	<u>The antiserum was produced against synthesized peptide derived from human p300/CBP. AA range:783-832</u>
Specificity :	<u>PCAF Polyclonal Antibody detects endogenous levels of PCAF protein.</u>
Formulation :	<u>Liquid in PBS containing 50% glycerol, 0.5% BSA and 0.02% sodium azide.</u>
Source :	<u>Rabbit</u>
Dilution :	<u>Western Blot: 1/500 - 1/2000. Immunohistochemistry: 1/100 - 1/300. ELISA: 1/10000. Not yet tested in other applications.</u>
Purification :	<u>The antibody was affinity-purified from rabbit antiserum by affinity-chromatography using epitope-specific immunogen.</u>
Concentration :	<u>1 mg/ml</u>
Storage_stability :	<u>-20°C/1 year</u>
Msds :	<u>MSDS_Antibody.pdf</u>
Other_name :	<u>KAT2B; PCAF; Histone acetyltransferase KAT2B; Histone acetyltransferase PCAF; Histone acetylase PCAF; Lysine acetyltransferase 2B; P300/CBP-associated factor; P/CAF</u>
Molecular	<u>93KD</u>



Weight :

Product Images



Western Blot analysis of various cells using PCAF Polyclonal Antibody cells nucleus extracted by Minute TM Cytoplasmic and Nuclear Fractionation kit (SC-003, Inventbiotech, MN, USA).