



## PCNA Polyclonal Antibody

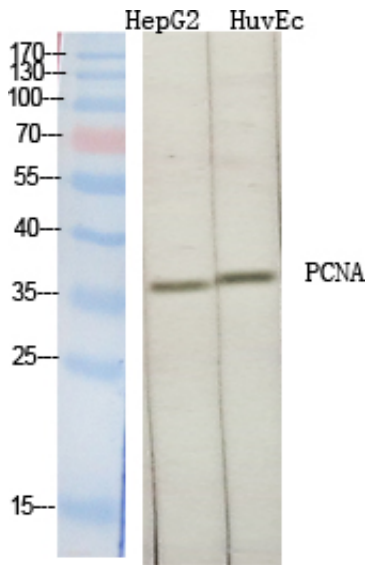
Catalog_no :	<u>AT3617</u>
Applications :	<u>WB,IHC-p,ELISA</u>
Reactivity :	<u>Human,Mouse,Rat,Monkey</u>
Category :	<u>抗原抗体</u>
Size :	<u>100µg/50µg/20µg</u>
Gene_name :	<u>PCNA</u>
Protein_name :	<u>Proliferating cell nuclear antigen</u>
Humangene_id	<u><a href="#">5111</a></u>
:	<u></u>
Humanswissprot	<u><a href="#">P12004</a></u>
_no :	<u></u>
Mousegene_id :	<u><a href="#">18538</a></u>
Mouseswissprot	<u><a href="#">P17918</a></u>
_no :	<u></u>
Ratgene_id :	<u><a href="#">25737</a></u>
Ratswissprot_no	<u><a href="#">P04961</a></u>
:	<u></u>
Immunogen :	<u>The antiserum was produced against synthesized peptide derived from human PCNA. AA range:61-110</u>
Specificity :	<u>PCNA Polyclonal Antibody detects endogenous levels of PCNA protein.</u>
Formulation :	<u>Liquid in PBS containing 50% glycerol, 0.5% BSA and 0.02% sodium azide.</u>
Source :	<u>Rabbit</u>
Dilution :	<u>Western Blot: 1/500 - 1/2000. Immunohistochemistry: 1/100 - 1/300. ELISA: 1/20000. Not yet tested in other applications.</u>
Purification :	<u>The antibody was affinity-purified from rabbit antiserum by affinity-chromatography using epitope-specific immunogen.</u>
Concentration :	<u>1 mg/ml</u>
Storage_stability	<u>-20°C/1 year</u>
:	<u></u>
Msds :	<u>MSDS_Antibody.pdf</u>



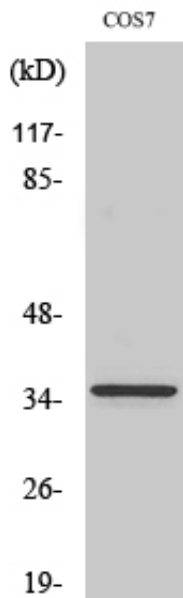
Other\_name : PCNA; Proliferating cell nuclear antigen; PCNA; Cyclin

Molecular Weight : 36KD

## Product Images



Western Blot analysis of various cells using PCNA Polyclonal Antibody diluted at 1 : 2000 cells nucleus extracted by Minute TM Cytoplasmic and Nuclear Fractionation kit (SC-003, Inventbiotech, MN, USA).



Western Blot analysis of COS7 cells using PCNA Polyclonal Antibody diluted at 1 : 2000 cells nucleus extracted by Minute TM Cytoplasmic and Nuclear Fractionation kit (SC-003, Inventbiotech, MN, USA).