

## PC-PLD4 Polyclonal Antibody

Catalog_no :	AT3622
Applications :	WB,ELISA
Reactivity :	Human,Mouse,Rat
Category :	抗原抗体
Size :	100µg/50µg/20µg
Gene_name :	PLD4
Protein_name :	Phospholipase D4
Humangene_id :	<a href="#">122618</a>
Humanswissprot_no :	<a href="#">Q96BZ4</a>
Mousegene_id :	<a href="#">104759</a>
Mouseswissprot_no :	<a href="#">Q8BG07</a>
Immunogen :	The antiserum was produced against synthesized peptide derived from human PLD4. AA range:457-506
Specificity :	PC-PLD4 Polyclonal Antibody detects endogenous levels of PC-PLD4 protein.
Formulation :	Liquid in PBS containing 50% glycerol, 0.5% BSA and 0.02% sodium azide.
Source :	Rabbit
Dilution :	Western Blot: 1/500 - 1/2000. ELISA: 1/5000. Not yet tested in other applications.
Purification :	The antibody was affinity-purified from rabbit antiserum by affinity-chromatography using epitope-specific immunogen.
Concentration :	1 mg/ml
Storage_stability :	-20°C/1 year
Msds :	MSDS_Antibody.pdf
Other_name :	PLD4; C14orf175; Phospholipase D4; PLD 4; Choline phosphatase 4; Phosphatidylcholine-hydrolyzing phospholipase D4
Molecular Weight :	50KD

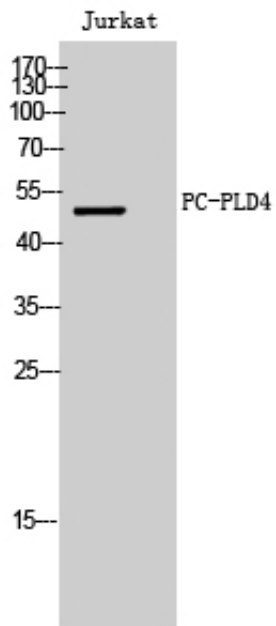


**专注二抗产品**

Biodragon旗下品牌

---

## Product Images



Western Blot analysis of Jurkat cells using PC-PLD4 Polyclonal Antibody