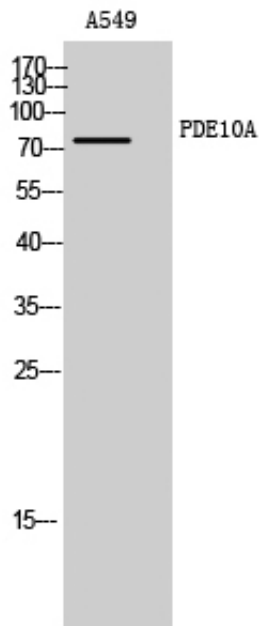


PDE10A Polyclonal Antibody

Catalog_no :	AT3627
Applications :	WB,ELISA
Reactivity :	Human,Rat
Category :	抗原抗体
Size :	100µg/50µg/20µg
Gene_name :	PDE10A
Protein_name :	cAMP and cAMP-inhibited cGMP 3',5'-cyclic phosphodiesterase 10A
Humangene_id :	10846
Humanswissprot_no :	Q9Y233
Ratgene_id :	63885
Ratswissprot_no :	Q9QYJ6
Immunogen :	The antiserum was produced against synthesized peptide derived from human PDE10A. AA range:21-70
Specificity :	PDE10A Polyclonal Antibody detects endogenous levels of PDE10A protein.
Formulation :	Liquid in PBS containing 50% glycerol, 0.5% BSA and 0.02% sodium azide.
Source :	Rabbit
Dilution :	Western Blot: 1/500 - 1/2000. ELISA: 1/5000. Not yet tested in other applications.
Purification :	The antibody was affinity-purified from rabbit antiserum by affinity-chromatography using epitope-specific immunogen.
Concentration :	1 mg/ml
Storage_stability :	-20°C/1 year
Msds :	MSDS_Antibody.pdf
Other_name :	PDE10A; cAMP and cAMP-inhibited cGMP 3'; 5'-cyclic phosphodiesterase 10A
Molecular Weight :	75KD

Product Images



Western Blot analysis of A549 cells using PDE10A Polyclonal Antibody