

PDGF-A Polyclonal Antibody

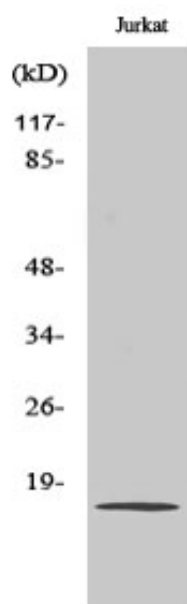
Catalog_no :	AT3630
Applications :	WB,IHC-p,ELISA
Reactivity :	Human,Mouse,Rat
Category :	抗原抗体
Size :	100µg/50µg/20µg
Gene_name :	PDGFA
Protein_name :	Platelet-derived growth factor subunit A
Humangene_id :	5154
Humanswissprot_no :	P04085
Mousegene_id :	18590
Mouseswissprot_no :	P20033
Ratgene_id :	25266
Ratswissprot_no :	P28576
Immunogen :	The antiserum was produced against synthesized peptide derived from human PDGF-A. AA range:105-154
Specificity :	PDGF-A Polyclonal Antibody detects endogenous levels of PDGF-A protein.
Formulation :	Liquid in PBS containing 50% glycerol, 0.5% BSA and 0.02% sodium azide.
Source :	Rabbit
Dilution :	Western Blot: 1/500 - 1/2000. Immunohistochemistry: 1/100 - 1/300. ELISA: 1/40000. Not yet tested in other applications.
Purification :	The antibody was affinity-purified from rabbit antiserum by affinity-chromatography using epitope-specific immunogen.
Concentration :	1 mg/ml
Storage_stability :	-20°C/1 year
Msds :	MSDS_Antibody.pdf



Other_name : PDGFA; PDGF1; Platelet-derived growth factor subunit A; PDGF subunit A; PDGF-1;
Platelet-derived growth factor A chain; Platelet-derived growth factor alpha polypeptide

Molecular Weight : 17KD

Product Images



Western Blot analysis of various cells using PDGF-A Polyclonal Antibody