



## PDGFR- $\beta$ Polyclonal Antibody

Catalog_no :	AT3639
Applications :	WB,IHC-p,IF,ELISA
Reactivity :	Human,Mouse,Rat
Category :	抗原抗体
Size :	100 $\mu$ g/50 $\mu$ g/20 $\mu$ g
Gene_name :	PDGFRB
Protein_name :	Platelet-derived growth factor receptor beta
Humangene_id :	<a href="#">5159</a>
Humanswissprot_no :	<a href="#">P09619</a>
Mousegene_id :	<a href="#">18596</a>
Mouseswissprot_no :	<a href="#">P05622</a>
Ratgene_id :	<a href="#">24629</a>
Ratswissprot_no :	<a href="#">Q05030</a>
Immunogen :	The antiserum was produced against synthesized peptide derived from human PDGF Receptor beta. AA range:718-767
Specificity :	PDGFR- $\beta$ Polyclonal Antibody detects endogenous levels of PDGFR- $\beta$ protein.
Formulation :	Liquid in PBS containing 50% glycerol, 0.5% BSA and 0.02% sodium azide.
Source :	Rabbit
Dilution :	Western Blot: 1/500 - 1/2000. Immunohistochemistry: 1/100 - 1/300. Immunofluorescence: 1/200 - 1/1000. ELISA: 1/40000. Not yet tested in other applications.
Purification :	The antibody was affinity-purified from rabbit antiserum by affinity-chromatography using epitope-specific immunogen.
Concentration :	1 mg/ml
Storage_stability :	-20°C/1 year

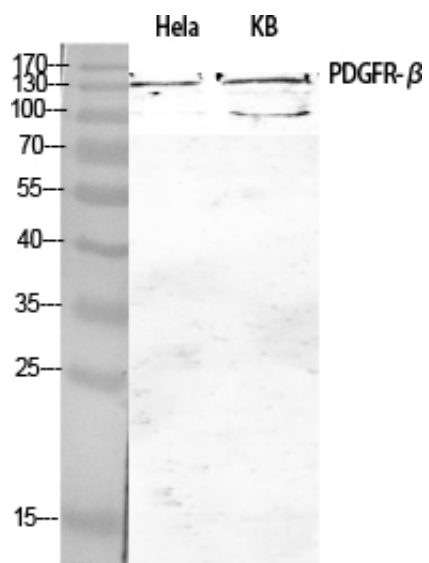


---

MsdS :	<a href="#">MSDS_Antibody.pdf</a>
Other_name :	<a href="#">PDGFRB; PDGFR; PDGFR1; Platelet-derived growth factor receptor beta; PDGF-R-beta; PDGFR-beta; Beta platelet-derived growth factor receptor; Beta-type platelet-derived growth factor receptor; CD140 antigen-like family member B; Platelet-deri</a>
Molecular Weight :	<a href="#">124KD</a>

---

## Product Images



Western Blot analysis of various cells using PDGFR- $\beta$  Polyclonal Antibody diluted at 1 : 1000