

PDHA1 Polyclonal Antibody

Catalog_no :	<u>AT3641</u>
Applications :	<u>WB,IHC-p,ELISA</u>
Reactivity :	<u>Human,Mouse,Rat</u>
Category :	<u>抗原抗体</u>
Size :	<u>100µg/50µg/20µg</u>
Gene_name :	<u>PDHA1</u>
Protein_name :	<u>Pyruvate dehydrogenase E1 component subunit alpha somatic form mitochondrial</u>
Humangene_id	<u>5160</u>
:	
Humanswissprot	<u>P08559</u>
_no :	
Mousegene_id :	<u>18597</u>
Mouseswissprot	<u>P35486</u>
_no :	
Ratswissprot_no	<u>P26284</u>
:	
Immunogen :	<u>The antiserum was produced against synthesized peptide derived from human PDHA1. AA range:314-363</u>
Specificity :	<u>PDHA1 Polyclonal Antibody detects endogenous levels of PDHA1 protein.</u>
Formulation :	<u>Liquid in PBS containing 50% glycerol, 0.5% BSA and 0.02% sodium azide.</u>
Source :	<u>Rabbit</u>
Dilution :	<u>Western Blot: 1/500 - 1/2000. Immunohistochemistry: 1/100 - 1/300. ELISA: 1/40000. Not yet tested in other applications.</u>
Purification :	<u>The antibody was affinity-purified from rabbit antiserum by affinity-chromatography using epitope-specific immunogen.</u>
Concentration :	<u>1 mg/ml</u>
Storage_stability	<u>-20°C/1 year</u>
:	
Msds :	<u>MSDS_Antibody.pdf</u>
Other_name :	<u>PDHA1; PHE1A; Pyruvate dehydrogenase E1 component subunit alpha; somatic form,</u>

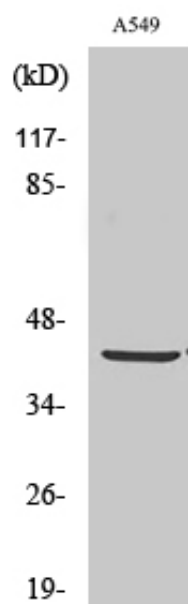


mitochondrial; PDHE1-A type I

Molecular
Weight :

43KD

Product Images



Western Blot analysis of various cells using PDHA1 Polyclonal Antibody diluted at 1 : 2000