

## PDIK1L Polyclonal Antibody

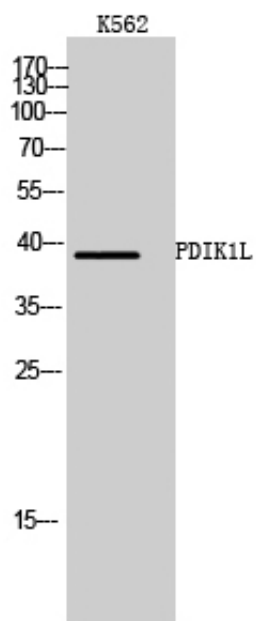
Catalog_no :	AT3642
Applications :	WB,IHC-p,ELISA
Reactivity :	Human,Mouse
Category :	抗原抗体
Size :	100µg/50µg/20µg
Gene_name :	PDIK1L
Protein_name :	Serine/threonine-protein kinase PDIK1L
Humangene_id :	<a href="#">149420</a>
Humanswissprot_no :	<a href="#">Q8N165</a>
Mousegene_id :	<a href="#">230809</a>
Mouseswissprot_no :	<a href="#">Q8QZR7</a>
Immunogen :	The antiserum was produced against synthesized peptide derived from human PDIK1L. AA range:101-150
Specificity :	PDIK1L Polyclonal Antibody detects endogenous levels of PDIK1L protein.
Formulation :	Liquid in PBS containing 50% glycerol, 0.5% BSA and 0.02% sodium azide.
Source :	Rabbit
Dilution :	Western Blot: 1/500 - 1/2000. Immunohistochemistry: 1/100 - 1/300. ELISA: 1/40000. Not yet tested in other applications.
Purification :	The antibody was affinity-purified from rabbit antiserum by affinity-chromatography using epitope-specific immunogen.
Concentration :	1 mg/ml
Storage_stability :	-20°C/1 year
Msds :	<a href="#">MSDS_Antibody.pdf</a>
Other_name :	PDIK1L; CLIK1L; Serine/threonine-protein kinase PDIK1L; PDLIM1-interacting kinase 1-like
Molecular	39KD



Weight :

---

## Product Images



Western Blot analysis of K562 cells using PDIK1L Polyclonal Antibody cells nucleus extracted by Minute TM Cytoplasmic and Nuclear Fractionation kit (SC-003, Inventbiotech, MN, USA).