

## PDK1 Polyclonal Antibody

Catalog_no :	AT3644
Applications :	WB,ELISA
Reactivity :	Human,Mouse,Rat
Category :	抗原抗体
Size :	100µg/50µg/20µg
Gene_name :	PDK1
Protein_name :	[Pyruvate dehydrogenase [lipoamide]] kinase isozyme 1 mitochondrial
Humangene_id :	<a href="#">5163</a>
Humanswissprot_no :	<a href="#">Q15118</a>
Mousegene_id :	<a href="#">228026</a>
Mouseswissprot_no :	<a href="#">Q8BFP9</a>
Ratswissprot_no :	<a href="#">Q63065</a>
Immunogen :	Synthesized peptide derived from PDK1 . at AA range: 80-160
Specificity :	PDK1 Polyclonal Antibody detects endogenous levels of PDK1 protein.
Formulation :	Liquid in PBS containing 50% glycerol, 0.5% BSA and 0.02% sodium azide.
Source :	Rabbit
Dilution :	Western Blot: 1/500 - 1/2000. ELISA: 1/5000. Not yet tested in other applications.
Purification :	The antibody was affinity-purified from rabbit antiserum by affinity-chromatography using epitope-specific immunogen.
Concentration :	1 mg/ml
Storage_stability :	-20°C/1 year
Msds :	<a href="#">MSDS_Antibody.pdf</a>
Other_name :	PDK1; PDHK1; [Pyruvate dehydrogenase [lipoamide]] kinase isozyme 1; mitochondrial; Pyruvate dehydrogenase kinase isoform 1

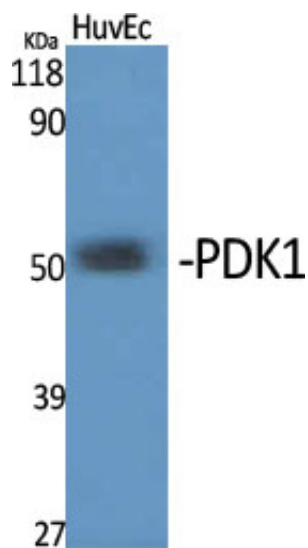


Molecular  
Weight :

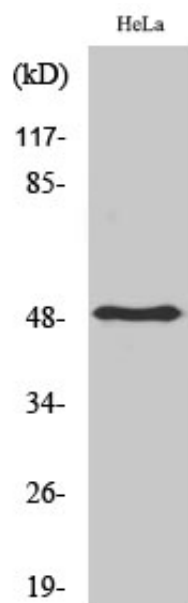
50KD

---

## Product Images



Western Blot analysis of various cells using PDK1 Polyclonal Antibody



Western Blot analysis of Hela cells using PDK1 Polyclonal Antibody