

## PDK2 Polyclonal Antibody

Catalog_no :	AT3646
Applications :	WB,IHC-p,ELISA
Reactivity :	Human,Mouse,Rat
Category :	抗原抗体
Size :	100µg/50µg/20µg
Gene_name :	PDK2
Protein_name :	[Pyruvate dehydrogenase [lipoamide]] kinase isozyme 2 mitochondrial
Humangene_id	<a href="#">5164</a>
:	
Humanswissprot	<a href="#">Q15119</a>
_no :	
Mousegene_id :	<a href="#">18604</a>
Mouseswissprot	<a href="#">Q9JK42</a>
_no :	
Ratgene_id :	<a href="#">81530</a>
Ratswissprot_no	<a href="#">Q64536</a>
:	
Immunogen :	The antiserum was produced against synthesized peptide derived from human PDK2. AA range:260-309
Specificity :	PDK2 Polyclonal Antibody detects endogenous levels of PDK2 protein.
Formulation :	Liquid in PBS containing 50% glycerol, 0.5% BSA and 0.02% sodium azide.
Source :	Rabbit
Dilution :	Western Blot: 1/500 - 1/2000. Immunohistochemistry: 1/100 - 1/300. ELISA: 1/20000. Not yet tested in other applications.
Purification :	The antibody was affinity-purified from rabbit antiserum by affinity-chromatography using epitope-specific immunogen.
Concentration :	1 mg/ml
Storage_stability	-20°C/1 year
:	
Msds :	MSDS_Antibody.pdf



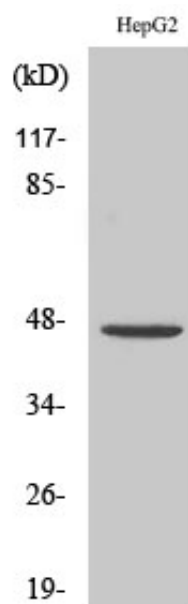
Other\_name : PDK2; PDHK2; [Pyruvate dehydrogenase [lipoamide]] kinase isozyme 2; mitochondrial; Pyruvate dehydrogenase kinase isoform 2

---

Molecular Weight : 46KD

---

## Product Images



Western Blot analysis of various cells using PDK2  
Polyclonal Antibody diluted at 1 : 500