

PDRG1 Polyclonal Antibody

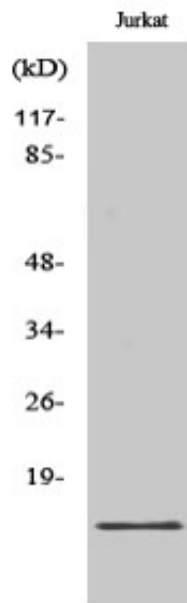
| | |
|---------------------|--|
| Catalog_no : | AT3648 |
| Applications : | WB,IHC-p,ELISA |
| Reactivity : | Human,Mouse,Rat |
| Category : | 抗原抗体 |
| Size : | 100µg/50µg/20µg |
| Gene_name : | PDRG1 |
| Protein_name : | p53 and DNA damage-regulated protein 1 |
| Humangene_id : | 81572 |
| Humanswissprot_no : | Q9NUG6 |
| Mousegene_id : | 68559 |
| Mouseswissprot_no : | P59048 |
| Ratgene_id : | 296278 |
| Ratswissprot_no : | Q642A0 |
| Immunogen : | The antiserum was produced against synthesized peptide derived from human PDRG1. AA range:58-107 |
| Specificity : | PDRG1 Polyclonal Antibody detects endogenous levels of PDRG1 protein. |
| Formulation : | Liquid in PBS containing 50% glycerol, 0.5% BSA and 0.02% sodium azide. |
| Source : | Rabbit |
| Dilution : | Western Blot: 1/500 - 1/2000. Immunohistochemistry: 1/100 - 1/300. ELISA: 1/40000. Not yet tested in other applications. |
| Purification : | The antibody was affinity-purified from rabbit antiserum by affinity-chromatography using epitope-specific immunogen. |
| Concentration : | 1 mg/ml |
| Storage_stability : | -20°C/1 year |
| Msds : | MSDS_Antibody.pdf |



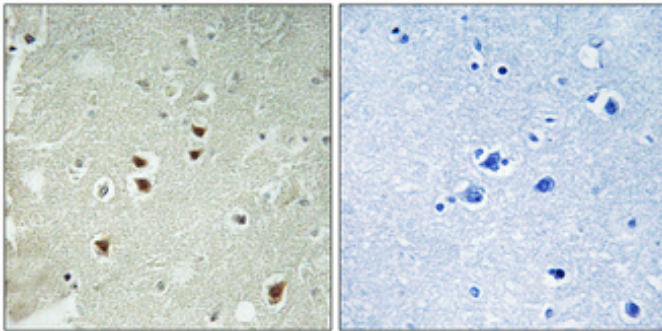
Other_name : PDRG1; C20orf126; PDRG; p53 and DNA damage-regulated protein 1

Molecular Weight : 19KD

Product Images



Western Blot analysis of various cells using PDRG1 Polyclonal Antibody



Immunohistochemical analysis of paraffin-embedded Human brain. Antibody was diluted at 1:100(4°,overnight). High-pressure and temperature Tris-EDTA,pH8.0 was used for antigen retrieval. Negative contrl (right) obtaned from antibody was pre-absorbed by immunogen peptide.