



PDXDC1 Polyclonal Antibody

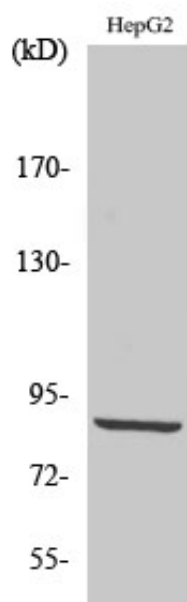
Catalog_no :	AT3650
Applications :	WB,IHC-p,ELISA
Reactivity :	Human,Mouse,Rat
Category :	抗原抗体
Size :	100µg/50µg/20µg
Gene_name :	PDXDC1
Protein_name :	Pyridoxal-dependent decarboxylase domain-containing protein 1
Humangene_id :	23042
Humanswissprot_no :	Q6P996
Mousegene_id :	94184
Mouseswissprot_no :	Q99K01
Immunogen :	The antiserum was produced against synthesized peptide derived from human PDXDC1. AA range:677-726
Specificity :	PDXDC1 Polyclonal Antibody detects endogenous levels of PDXDC1 protein.
Formulation :	Liquid in PBS containing 50% glycerol, 0.5% BSA and 0.02% sodium azide.
Source :	Rabbit
Dilution :	Western Blot: 1/500 - 1/2000. Immunohistochemistry: 1/100 - 1/300. ELISA: 1/10000. Not yet tested in other applications.
Purification :	The antibody was affinity-purified from rabbit antiserum by affinity-chromatography using epitope-specific immunogen.
Concentration :	1 mg/ml
Storage_stability :	-20°C/1 year
Msds :	MSDS_Antibody.pdf
Other_name :	PDXDC1; KIAA0251; Pyridoxal-dependent decarboxylase domain-containing protein 1
Molecular Weight :	87KD



专注二抗产品

Biodragon旗下品牌

Product Images



Western Blot analysis of various cells using PDXDC1 Polyclonal Antibody