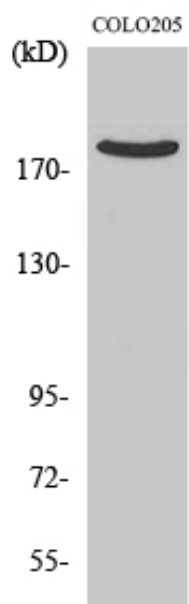


## PDZ-RhoGEF Polyclonal Antibody

Catalog_no :	AT3652
Applications :	WB,ELISA
Reactivity :	Human,Mouse,Rat
Category :	抗原抗体
Size :	100µg/50µg/20µg
Gene_name :	ARHGEF11
Protein_name :	Rho guanine nucleotide exchange factor 11
Humangene_id :	<a href="#">9826</a>
Humanswissprot_no :	<a href="#">O15085</a>
Ratgene_id :	<a href="#">78966</a>
Ratswissprot_no :	<a href="#">Q9ES67</a>
Immunogen :	The antiserum was produced against synthesized peptide derived from human ARHGEF11. AA range:198-247
Specificity :	PDZ-RhoGEF Polyclonal Antibody detects endogenous levels of PDZ-RhoGEF protein.
Formulation :	Liquid in PBS containing 50% glycerol, 0.5% BSA and 0.02% sodium azide.
Source :	Rabbit
Dilution :	Western Blot: 1/500 - 1/2000. ELISA: 1/5000. Not yet tested in other applications.
Purification :	The antibody was affinity-purified from rabbit antiserum by affinity-chromatography using epitope-specific immunogen.
Concentration :	1 mg/ml
Storage_stability :	-20°C/1 year
Msds :	<a href="#">MSDS_Antibody.pdf</a>
Other_name :	ARHGEF11; KIAA0380; Rho guanine nucleotide exchange factor 11; PDZ-RhoGEF

## Product Images



Western Blot analysis of various cells using PDZ-RhoGEF Polyclonal Antibody