

PEBP2 β Polyclonal Antibody

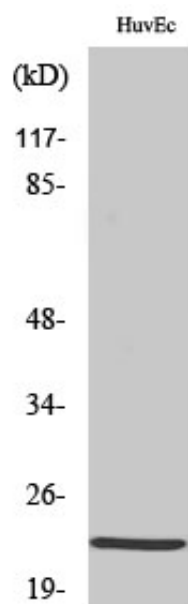
Catalog_no :	AT3657
Applications :	WB,IHC-p,IF,ELISA
Reactivity :	Human,Mouse,Rat
Category :	抗原抗体
Size :	100 μ g/50 μ g/20 μ g
Gene_name :	CBFB
Protein_name :	Core-binding factor subunit beta
Humangene_id :	865
Humanswissprot_no :	Q13951
Mousegene_id :	12400
Mouseswissprot_no :	Q08024
Immunogen :	The antiserum was produced against synthesized peptide derived from human CBF beta. AA range:11-60
Specificity :	PEBP2 β Polyclonal Antibody detects endogenous levels of PEBP2 β protein.
Formulation :	Liquid in PBS containing 50% glycerol, 0.5% BSA and 0.02% sodium azide.
Source :	Rabbit
Dilution :	Western Blot: 1/500 - 1/2000. Immunohistochemistry: 1/100 - 1/300. Immunofluorescence: 1/200 - 1/1000. ELISA: 1/20000. Not yet tested in other applications.
Purification :	The antibody was affinity-purified from rabbit antiserum by affinity-chromatography using epitope-specific immunogen.
Concentration :	1 mg/ml
Storage_stability :	-20°C/1 year
Msds :	MSDS_Antibody.pdf
Other_name :	CBFB; Core-binding factor subunit beta; CBF-beta; Polyomavirus enhancer-binding protein 2 beta subunit; PEA2-beta; PEBP2-beta; SL3-3 enhancer factor 1 subunit beta; SL3/AKV core-binding factor beta subunit



Molecular
Weight :

22KD

Product Images



Western Blot analysis of various cells using PEBP2 β Polyclonal Antibody cells nucleus extracted by Minute TM Cytoplasmic and Nuclear Fractionation kit (SC-003, Inventbiotech, MN, USA).