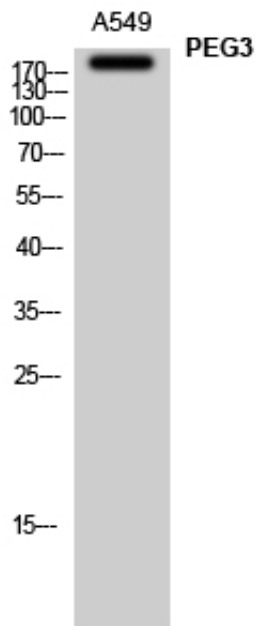


PEG3 Polyclonal Antibody

Catalog_no :	AT3659
Applications :	WB,ELISA
Reactivity :	Human
Category :	抗原抗体
Size :	100µg/50µg/20µg
Gene_name :	PEG3
Protein_name :	Paternally-expressed gene 3 protein
Humangene_id :	5178
Humanswissprot_no :	Q9GZU2
Immunogen :	The antiserum was produced against synthesized peptide derived from human PEG3. AA range:1031-1080
Specificity :	PEG3 Polyclonal Antibody detects endogenous levels of PEG3 protein.
Formulation :	Liquid in PBS containing 50% glycerol, 0.5% BSA and 0.02% sodium azide.
Source :	Rabbit
Dilution :	Western Blot: 1/500 - 1/2000. ELISA: 1/10000. Not yet tested in other applications.
Purification :	The antibody was affinity-purified from rabbit antiserum by affinity-chromatography using epitope-specific immunogen.
Concentration :	1 mg/ml
Storage_stability :	-20°C/1 year
Msds :	MSDS_Antibody.pdf
Other_name :	PEG3; KIAA0287; ZSCAN24; Paternally-expressed gene 3 protein; Zinc finger and SCAN domain-containing protein 24
Molecular Weight :	181KD

Product Images



Western Blot analysis of A549 cells using PEG3 Polyclonal Antibody