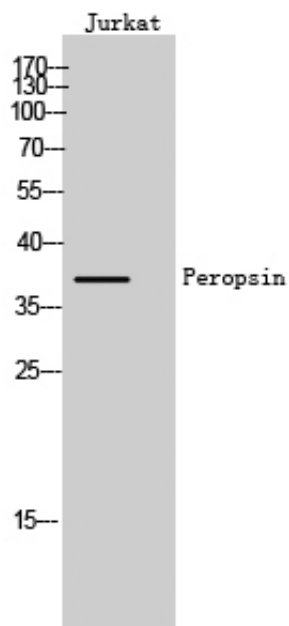




Peropsin Polyclonal Antibody

Catalog_no :	AT3668
Applications :	WB,IHC-p,ELISA
Reactivity :	Human
Category :	抗原抗体
Size :	100µg/50µg/20µg
Gene_name :	RRH
Protein_name :	Visual pigment-like receptor peropsin
Humangene_id :	10692
Humanswissprot_no :	O14718
Immunogen :	The antiserum was produced against synthesized peptide derived from human RRH. AA range:201-250
Specificity :	Peropsin Polyclonal Antibody detects endogenous levels of Peropsin protein.
Formulation :	Liquid in PBS containing 50% glycerol, 0.5% BSA and 0.02% sodium azide.
Source :	Rabbit
Dilution :	Western Blot: 1/500 - 1/2000. ELISA: 1/10000. Not yet tested in other applications.
Purification :	The antibody was affinity-purified from rabbit antiserum by affinity-chromatography using epitope-specific immunogen.
Concentration :	1 mg/ml
Storage_stability :	-20°C/1 year
Msds :	MSDS_Antibody.pdf
Other_name :	RRH; Visual pigment-like receptor peropsin
Molecular Weight :	37KD

Product Images



Western Blot analysis of Jurkat cells using Peropsin Polyclonal Antibody