

PFKM Polyclonal Antibody

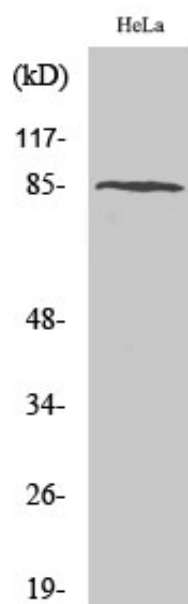
Catalog_no :	AT3680
Applications :	WB,IHC-p,ELISA
Reactivity :	Human,Mouse,Rat
Category :	抗原抗体
Size :	100µg/50µg/20µg
Gene_name :	PFKM
Protein_name :	6-phosphofructokinase muscle type
Humangene_id :	5213
Humanswissprot_no :	P08237
Mousegene_id :	18642
Mouseswissprot_no :	P47857
Ratgene_id :	65152
Ratswissprot_no :	P47858
Immunogen :	The antiserum was produced against synthesized peptide derived from human PFK-1. AA range:320-369
Specificity :	PFKM Polyclonal Antibody detects endogenous levels of PFKM protein.
Formulation :	Liquid in PBS containing 50% glycerol, 0.5% BSA and 0.02% sodium azide.
Source :	Rabbit
Dilution :	Western Blot: 1/500 - 1/2000. Immunohistochemistry: 1/100 - 1/300. ELISA: 1/10000. Not yet tested in other applications.
Purification :	The antibody was affinity-purified from rabbit antiserum by affinity-chromatography using epitope-specific immunogen.
Concentration :	1 mg/ml
Storage_stability :	-20°C/1 year
Msds :	MSDS_Antibody.pdf



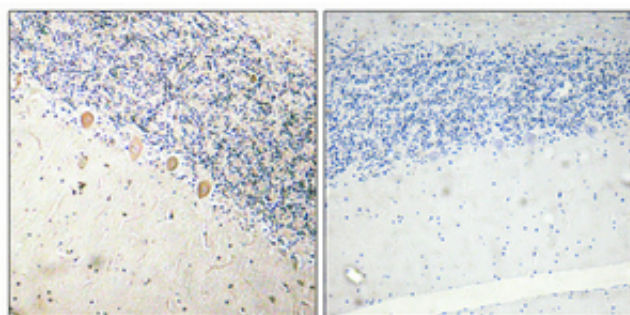
Other_name : PFKM; PFKX; 6-phosphofructokinase; muscle type; Phosphofructo-1-kinase isozyme A; PFK-A; Phosphofructokinase-M; Phosphofructokinase 1; Phosphohexokinase

Molecular Weight : 85KD

Product Images



Western Blot analysis of various cells using PFKM Polyclonal Antibody



Immunohistochemical analysis of paraffin-embedded Human brain. Antibody was diluted at 1:100(4°,overnight). High-pressure and temperature Tris-EDTA,pH8.0 was used for antigen retrieval. Negative contrl (right) obtaned from antibody was pre-absorbed by immunogen peptide.