

PFK-2 car Polyclonal Antibody

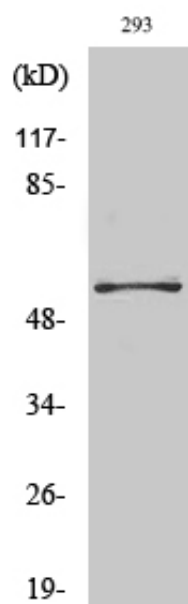
Catalog_no :	AT3681
Applications :	WB,IHC-p,ELISA
Reactivity :	Human,Mouse,Rat
Category :	抗原抗体
Size :	100µg/50µg/20µg
Gene_name :	PFKFB2
Protein_name :	6-phosphofructo-2-kinase/fructose-2,6-bisphosphatase 2
Humangene_id :	5208
Humanswissprot_no :	O60825
Mousegene_id :	18640
Mouseswissprot_no :	P70265
Ratgene_id :	24640
Ratswissprot_no :	Q9JJH5
Immunogen :	The antiserum was produced against synthesized peptide derived from human PFKFB2. AA range:451-500
Specificity :	PFK-2 car Polyclonal Antibody detects endogenous levels of PFK-2 car protein.
Formulation :	Liquid in PBS containing 50% glycerol, 0.5% BSA and 0.02% sodium azide.
Source :	Rabbit
Dilution :	Western Blot: 1/500 - 1/2000. Immunohistochemistry: 1/100 - 1/300. ELISA: 1/5000. Not yet tested in other applications.
Purification :	The antibody was affinity-purified from rabbit antiserum by affinity-chromatography using epitope-specific immunogen.
Concentration :	1 mg/ml
Storage_stability :	-20°C/1 year
Msds :	MSDS_Antibody.pdf



Other_name : PFKFB2; 6-phosphofructo-2-kinase/fructose-2; 6-bisphosphatase 2;
6PF-2-K/Fru-2,6-P2ase 2; PFK/FBPase 2; 6PF-2-K/Fru-2,6-P2ase heart-type isozyme

Molecular Weight : 58KD

Product Images



Western Blot analysis of various cells using PFK-2 car Polyclonal Antibody