

PFK-2 liv Polyclonal Antibody

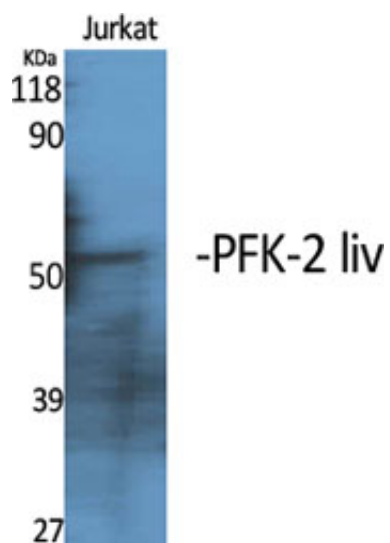
Catalog_no :	<u>AT3683</u>
Applications :	<u>WB,IHC-p,ELISA</u>
Reactivity :	<u>Human,Mouse,Rat</u>
Category :	<u>抗原抗体</u>
Size :	<u>100µg/50µg/20µg</u>
Gene_name :	<u>PFKFB1</u>
Protein_name :	<u>6-phosphofructo-2-kinase/fructose-2,6-bisphosphatase 1</u>
Humangene_id :	<u>5207</u>
Humanswissprot_no :	<u>P16118</u>
Mousegene_id :	<u>18639</u>
Mouseswissprot_no :	<u>P70266</u>
Ratgene_id :	<u>24638</u>
Ratswissprot_no :	<u>P07953</u>
Immunogen :	<u>The antiserum was produced against synthesized peptide derived from human PFKFB1. AA range:406-455</u>
Specificity :	<u>PFK-2 liv Polyclonal Antibody detects endogenous levels of PFK-2 liv protein.</u>
Formulation :	<u>Liquid in PBS containing 50% glycerol, 0.5% BSA and 0.02% sodium azide.</u>
Source :	<u>Rabbit</u>
Dilution :	<u>Western Blot: 1/500 - 1/2000. Immunohistochemistry: 1/100 - 1/300. ELISA: 1/5000. Not yet tested in other applications.</u>
Purification :	<u>The antibody was affinity-purified from rabbit antiserum by affinity-chromatography using epitope-specific immunogen.</u>
Concentration :	<u>1 mg/ml</u>
Storage_stability :	<u>-20°C/1 year</u>
Msds :	<u>MSDS_Antibody.pdf</u>



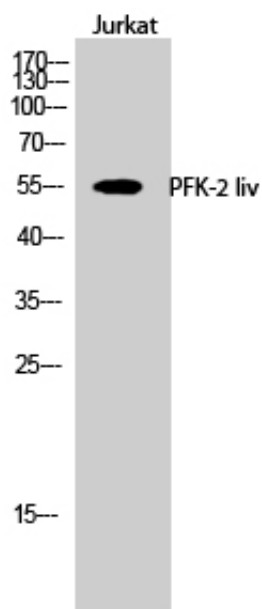
Other_name : PFKFB1; F6PK; PFRX; 6-phosphofructo-2-kinase/fructose-2; 6-bisphosphatase 1;
6PF-2-K/Fru-2,6-P2ase 1; PFK/FBPase 1; 6PF-2-K/Fru-2,6-P2ase liver isozyme

Molecular Weight : 58KD

Product Images



Western Blot analysis of various cells using PFK-2 liv Polyclonal Antibody



Western Blot analysis of Jurkat cells using PFK-2 liv Polyclonal Antibody