

## PFK-2 liv/tes Polyclonal Antibody

Catalog_no :	AT3684
Applications :	WB,ELISA
Reactivity :	Human,Mouse,Rat
Category :	抗原抗体
Size :	100µg/50µg/20µg
Gene_name :	PFKFB1/PFKFB4
Protein_name :	6-phosphofructo-2-kinase/fructose-2,6-biphosphate 1/4
Humangene_id :	<a href="#">5207/5210</a>
Humanswissprot_no :	<a href="#">P16118/Q16877</a>
Mousegene_id :	<a href="#">18639/270198</a>
Ratgene_id :	<a href="#">24638/54283</a>
Ratswissprot_no :	<a href="#">P07953/P25114</a>
Immunogen :	The antiserum was produced against synthesized peptide derived from human PFKFB1/4. AA range:331-380
Specificity :	PFK-2 liv/tes Polyclonal Antibody detects endogenous levels of PFK-2 liv/tes protein.
Formulation :	Liquid in PBS containing 50% glycerol, 0.5% BSA and 0.02% sodium azide.
Source :	Rabbit
Dilution :	Western Blot: 1/500 - 1/2000. ELISA: 1/20000. Not yet tested in other applications.
Purification :	The antibody was affinity-purified from rabbit antiserum by affinity-chromatography using epitope-specific immunogen.
Concentration :	1 mg/ml
Storage_stability :	-20°C/1 year
Msds :	MSDS_Antibody.pdf
Other_name :	PFKFB1; F6PK; PFRX; 6-phosphofructo-2-kinase/fructose-2; 6-bisphosphatase 1; 6PF-2-K/Fru-2,6-P2ase 1; PFK/FBPase 1; 6PF-2-K/Fru-2,6-P2ase liver isozyme; PFKFB4; 6-phosphofructo-2-kinase/fructose-2,6-bisphosphatase 4; 6PF-2-K/Fru-2,6-P2ase 4;

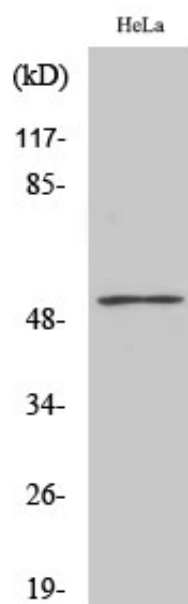


Molecular  
Weight :

54KD

---

## Product Images



Western Blot analysis of various cells using PFK-2 liv/tes Polyclonal Antibody