

## PFK-B Polyclonal Antibody

|                   |   |
|-------------------|---|
| Catalog_no :      | <u>AT3685</u>   |
| Applications :    | <u>WB,IHC-p,ELISA</u>   |
| Reactivity :      | <u>Human,Mouse,Rat</u>  |
| Category :        | <u>抗原抗体</u>   |
| Size :            | <u>100µg/50µg/20µg</u>  |
| Gene_name :       | <u>PFKL</u>   |
| Protein_name :    | <u>6-phosphofructokinase liver type</u>   |
| Humangene_id      | <u><a href="#">5211</a></u>   |
| :                 | <u></u>   |
| Humanswissprot    | <u><a href="#">P17858</a></u>   |
| _no :             | <u></u>   |
| Mousegene_id :    | <u><a href="#">18641</a></u>  |
| Mouseswissprot    | <u><a href="#">P12382</a></u>   |
| _no :             | <u></u>   |
| Ratgene_id :      | <u><a href="#">25741</a></u>  |
| Ratswissprot_no   | <u><a href="#">P30835</a></u>   |
| :                 | <u></u>   |
| Immunogen :       | <u>The antiserum was produced against synthesized peptide derived from human K6PL. AA range:691-740</u>                         |
| Specificity :     | <u>PFK-B Polyclonal Antibody detects endogenous levels of PFK-B protein.</u>  |
| Formulation :     | <u>Liquid in PBS containing 50% glycerol, 0.5% BSA and 0.02% sodium azide.</u>  |
| Source :          | <u>Rabbit</u>   |
| Dilution :        | <u>Western Blot: 1/500 - 1/2000. Immunohistochemistry: 1/100 - 1/300. ELISA: 1/20000. Not yet tested in other applications.</u> |
| Purification :    | <u>The antibody was affinity-purified from rabbit antiserum by affinity-chromatography using epitope-specific immunogen.</u>    |
| Concentration :   | <u>1 mg/ml</u>  |
| Storage_stability | <u>-20°C/1 year</u>   |
| :                 | <u></u>   |
| Msds :            | <u>MSDS_Antibody.pdf</u>  |



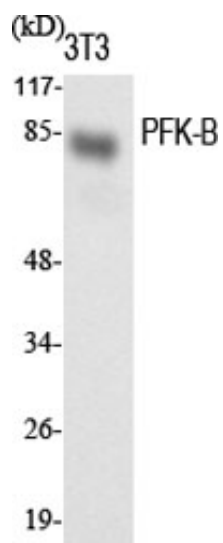
Other\_name : PFKL; 6-phosphofructokinase; liver type; Phosphofructo-1-kinase isozyme B; PFK-B;  
Phosphofructokinase 1; Phosphohexokinase

---

Molecular Weight : 85KD

---

## Product Images



Western Blot analysis of various cells using PFK-B Polyclonal Antibody diluted at 1 : 1000



Western Blot analysis of NIH-3T3 cells using PFK-B Polyclonal Antibody diluted at 1 : 1000