

## PFK-C Polyclonal Antibody

Catalog_no :	AT3686
Applications :	WB,IHC-p,IF,ELISA
Reactivity :	Human,Mouse,Rat,Monkey
Category :	抗原抗体
Size :	100µg/50µg/20µg
Gene_name :	PFKP
Protein_name :	6-phosphofructokinase type C
Humangene_id	<a href="#">5214</a>
:	
Humanswissprot	<a href="#">Q01813</a>
_no :	
Mousegene_id :	<a href="#">56421</a>
Mouseswissprot	<a href="#">Q9WUA3</a>
_no :	
Ratgene_id :	<a href="#">60416</a>
Ratswissprot_no	<a href="#">P47860</a>
:	
Immunogen :	The antiserum was produced against synthesized peptide derived from human K6PP. AA range:341-390
Specificity :	PFK-C Polyclonal Antibody detects endogenous levels of PFK-C protein.
Formulation :	Liquid in PBS containing 50% glycerol, 0.5% BSA and 0.02% sodium azide.
Source :	Rabbit
Dilution :	Western Blot: 1/500 - 1/2000. Immunohistochemistry: 1/100 - 1/300. Immunofluorescence: 1/200 - 1/1000. ELISA: 1/5000. Not yet tested in other applications.
Purification :	The antibody was affinity-purified from rabbit antiserum by affinity-chromatography using epitope-specific immunogen.
Concentration :	1 mg/ml
Storage_stability	-20°C/1 year
:	

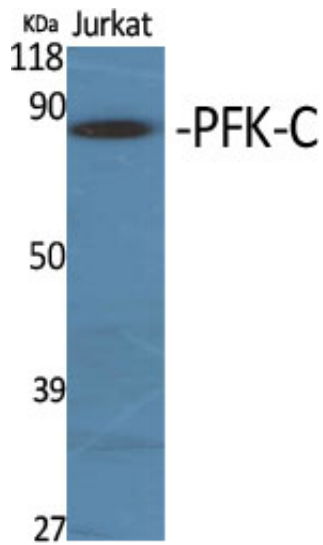


MsdS : MSDS\_Antibody.pdf

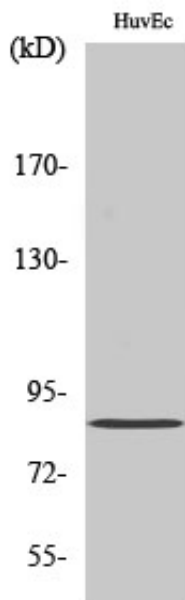
Other\_name : PFKP; PFKF; 6-phosphofructokinase type C; 6-phosphofructokinase; platelet type; Phosphofructo-1-kinase isozyme C; PFK-C; Phosphofructokinase 1; Phosphohexokinase

Molecular Weight : 84KD

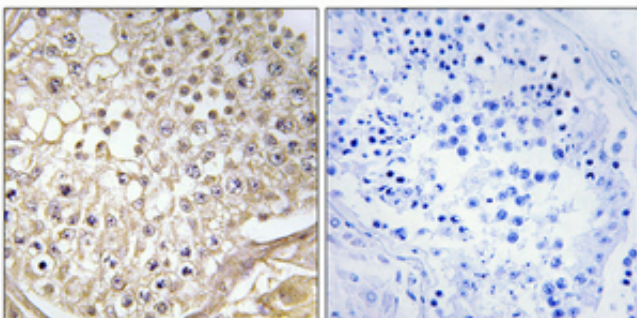
## Product Images



Western Blot analysis of various cells using PFK-C Polyclonal Antibody



Western Blot analysis of HuvEc cells using PFK-C Polyclonal Antibody



Immunohistochemical analysis of paraffin-embedded Human testis. Antibody was diluted at 1:100(4°, overnight). High-pressure and temperature Tris-EDTA, pH8.0 was used for antigen retrieval. Negative control (right) obtained from antibody was pre-absorbed by immunogen peptide.