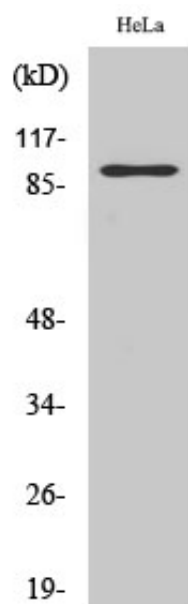


## PGBD1 Polyclonal Antibody

Catalog_no :	AT3687
Applications :	WB,IHC-p,ELISA
Reactivity :	Human
Category :	抗原抗体
Size :	100µg/50µg/20µg
Gene_name :	PGBD1
Protein_name :	PiggyBac transposable element-derived protein 1
Humangene_id :	<a href="#">84547</a>
Humanswissprot_no :	<a href="#">Q96JS3</a>
Immunogen :	The antiserum was produced against synthesized peptide derived from human PGBD1. AA range:241-290
Specificity :	PGBD1 Polyclonal Antibody detects endogenous levels of PGBD1 protein.
Formulation :	Liquid in PBS containing 50% glycerol, 0.5% BSA and 0.02% sodium azide.
Source :	Rabbit
Dilution :	Western Blot: 1/500 - 1/2000. Immunohistochemistry: 1/100 - 1/300. ELISA: 1/20000. Not yet tested in other applications.
Purification :	The antibody was affinity-purified from rabbit antiserum by affinity-chromatography using epitope-specific immunogen.
Concentration :	1 mg/ml
Storage_stability :	-20°C/1 year
Msds :	MSDS_Antibody.pdf
Other_name :	PGBD1; hucep-4; PiggyBac transposable element-derived protein 1; Cerebral protein 4
Molecular Weight :	92KD

## Product Images



Western Blot analysis of various cells using PGBD1 Polyclonal Antibody cells nucleus extracted by Minute TM Cytoplasmic and Nuclear Fractionation kit (SC-003, Inventbiotech, MN, USA).