

## PGE synthase Polyclonal Antibody

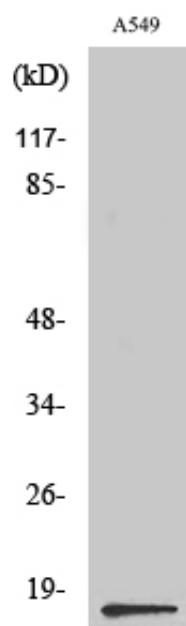
Catalog_no :	AT3689
Applications :	WB,ELISA
Reactivity :	Human,Mouse,Rat
Category :	抗原抗体
Size :	100µg/50µg/20µg
Gene_name :	PTGES
Protein_name :	Prostaglandin E synthase
Humangene_id :	<a href="#">9536</a>
Humanswissprot_no :	<a href="#">O14684</a>
Mousegene_id :	<a href="#">64292</a>
Mouseswissprot_no :	<a href="#">Q9JMS1</a>
Immunogen :	The antiserum was produced against synthesized peptide derived from human PGE synthase. AA range:30-79
Specificity :	PGE synthase Polyclonal Antibody detects endogenous levels of PGE synthase protein.
Formulation :	Liquid in PBS containing 50% glycerol, 0.5% BSA and 0.02% sodium azide.
Source :	Rabbit
Dilution :	Western Blot: 1/500 - 1/2000. ELISA: 1/10000. Not yet tested in other applications.
Purification :	The antibody was affinity-purified from rabbit antiserum by affinity-chromatography using epitope-specific immunogen.
Concentration :	1 mg/ml
Storage_stability :	-20°C/1 year
Msds :	MSDS_Antibody.pdf
Other_name :	PTGES; MGST1L1; MPGES1; PGES; PIG12; Prostaglandin E synthase; Microsomal glutathione S-transferase 1-like 1; MGST1-L1; Microsomal prostaglandin E synthase 1; MPGES-1; p53-induced gene 12 protein
Molecular	17KD



Weight :

---

## Product Images



Western Blot analysis of various cells using PGE synthase Polyclonal Antibody diluted at 1 : 500