

## PGRMC2 Polyclonal Antibody

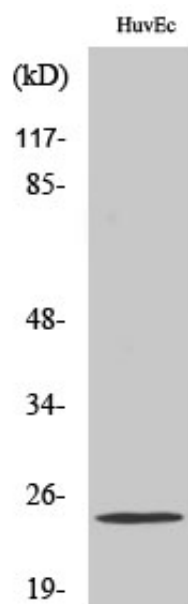
Catalog_no :	AT3693
Applications :	WB,ELISA
Reactivity :	Human,Mouse,Rat
Category :	抗原抗体
Size :	100µg/50µg/20µg
Gene_name :	PGRMC2
Protein_name :	Membrane-associated progesterone receptor component 2
Humangene_id :	<a href="#">10424</a>
Humanswissprot_no :	<a href="#">O15173</a>
Mousegene_id :	<a href="#">70804</a>
Mouseswissprot_no :	<a href="#">Q80UU9</a>
Ratgene_id :	<a href="#">361940</a>
Ratswissprot_no :	<a href="#">Q5XIU9</a>
Immunogen :	The antiserum was produced against synthesized peptide derived from human PGRMC2. AA range:174-223
Specificity :	PGRMC2 Polyclonal Antibody detects endogenous levels of PGRMC2 protein.
Formulation :	Liquid in PBS containing 50% glycerol, 0.5% BSA and 0.02% sodium azide.
Source :	Rabbit
Dilution :	Western Blot: 1/500 - 1/2000. ELISA: 1/5000. Not yet tested in other applications.
Purification :	The antibody was affinity-purified from rabbit antiserum by affinity-chromatography using epitope-specific immunogen.
Concentration :	1 mg/ml
Storage_stability :	-20°C/1 year
Msds :	<a href="#">MSDS_Antibody.pdf</a>



Other\_name : PGRMC2; DG6; PMBP; Membrane-associated progesterone receptor component 2;  
Progesterone membrane-binding protein; Steroid receptor protein DG6

Molecular Weight : 25KD

## Product Images



Western Blot analysis of various cells using PGRMC2  
Polyclonal Antibody diluted at 1 : 1000