



PHAPI2 Polyclonal Antibody

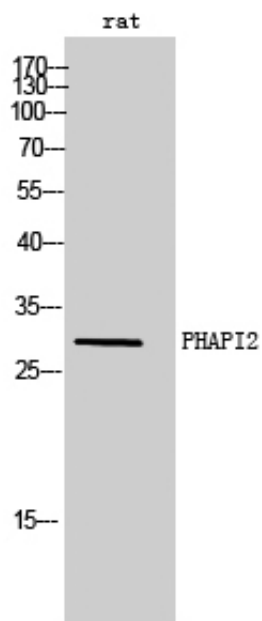
Catalog_no :	<u>AT3695</u>
Applications :	<u>WB,ELISA</u>
Reactivity :	<u>Human,Mouse,Rat</u>
Category :	<u>抗原抗体</u>
Size :	<u>100µg/50µg/20µg</u>
Gene_name :	<u>ANP32B</u>
Protein_name :	<u>Acidic leucine-rich nuclear phosphoprotein 32 family member B</u>
Humangene_id	<u>10541</u>
:	<u></u>
Humanswissprot	<u>Q92688</u>
_no :	<u></u>
Mousegene_id :	<u>67628</u>
Mouseswissprot	<u>Q9EST5</u>
_no :	<u></u>
Ratgene_id :	<u>170724</u>
Ratswissprot_no	<u>Q9EST6</u>
:	<u></u>
Immunogen :	<u>The antiserum was produced against synthesized peptide derived from human ANP32B. AA range:1-50</u>
Specificity :	<u>PHAPI2 Polyclonal Antibody detects endogenous levels of PHAPI2 protein.</u>
Formulation :	<u>Liquid in PBS containing 50% glycerol, 0.5% BSA and 0.02% sodium azide.</u>
Source :	<u>Rabbit</u>
Dilution :	<u>Western Blot: 1/500 - 1/2000. ELISA: 1/40000. Not yet tested in other applications.</u>
Purification :	<u>The antibody was affinity-purified from rabbit antiserum by affinity-chromatography using epitope-specific immunogen.</u>
Concentration :	<u>1 mg/ml</u>
Storage_stability	<u>-20°C/1 year</u>
:	<u></u>
Msds :	<u>MSDS_Antibody.pdf</u>



Other_name : ANP32B; APRIL; PHAPI2; Acidic leucine-rich nuclear phosphoprotein 32 family member B; Acidic protein rich in leucines; Putative HLA-DR-associated protein I-2; PHAPI2; Silver-stainable protein SSP29

Molecular Weight : 29KD

Product Images



Western Blot analysis of rat cells using PHAPI2 Polyclonal Antibody cells nucleus extracted by Minute TM Cytoplasmic and Nuclear Fractionation kit (SC-003, Inventbiotech, MN, USA).