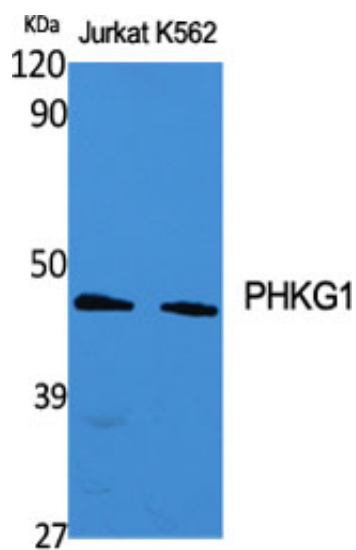


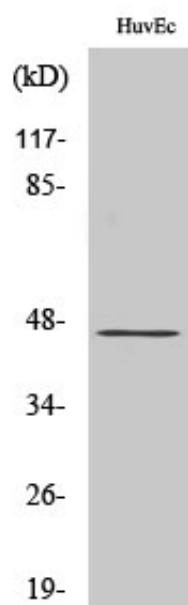
PHKG1 Polyclonal Antibody

Catalog_no :	AT3702
Applications :	WB,ELISA
Reactivity :	Human
Category :	抗原抗体
Size :	100µg/50µg/20µg
Gene_name :	PHKG1
Protein_name :	Phosphorylase b kinase gamma catalytic chain skeletal muscle isoform
Humangene_id :	5260
Humanswissprot_no :	Q16816
Immunogen :	The antiserum was produced against synthesized peptide derived from human PHKG1. AA range:241-290
Specificity :	PHKG1 Polyclonal Antibody detects endogenous levels of PHKG1 protein.
Formulation :	Liquid in PBS containing 50% glycerol, 0.5% BSA and 0.02% sodium azide.
Source :	Rabbit
Dilution :	Western Blot: 1/500 - 1/2000. ELISA: 1/20000. Not yet tested in other applications.
Purification :	The antibody was affinity-purified from rabbit antiserum by affinity-chromatography using epitope-specific immunogen.
Concentration :	1 mg/ml
Storage_stability :	-20°C/1 year
Msds :	MSDS_Antibody.pdf
Other_name :	PHKG1; PHKG; Phosphorylase b kinase gamma catalytic chain; skeletal muscle isoform; Phosphorylase kinase subunit gamma-1
Molecular Weight :	45KD

Product Images



Western Blot analysis of various cells using PHKG1 Polyclonal Antibody



Western Blot analysis of HepG2 cells using PHKG1 Polyclonal Antibody