

## pHyde Polyclonal Antibody

Catalog_no :	<u>AT3707</u>
Applications :	<u>WB,IHC-p,IF,ELISA</u>
Reactivity :	<u>Human,Mouse,Rat</u>
Category :	<u>抗原抗体</u>
Size :	<u>100µg/50µg/20µg</u>
Gene_name :	<u>STEAP3</u>
Protein_name :	<u>Metalloreductase STEAP3</u>
Humangene_id	<u><a href="#">55240</a></u>
:	<u></u>
Humanswissprot	<u><a href="#">Q658P3</a></u>
_no :	<u></u>
Mousegene_id :	<u><a href="#">68428</a></u>
Mouseswissprot	<u><a href="#">Q8CI59</a></u>
_no :	<u></u>
Ratgene_id :	<u><a href="#">170824</a></u>
Ratswissprot_no	<u><a href="#">Q5RKL5</a></u>
:	<u></u>
Immunogen :	<u>The antiserum was produced against synthesized peptide derived from human STEA3. AA range:421-470</u>
Specificity :	<u>pHyde Polyclonal Antibody detects endogenous levels of pHyde protein.</u>
Formulation :	<u>Liquid in PBS containing 50% glycerol, 0.5% BSA and 0.02% sodium azide.</u>
Source :	<u>Rabbit</u>
Dilution :	<u>Western Blot: 1/500 - 1/2000. Immunohistochemistry: 1/100 - 1/300. Immunofluorescence: 1/200 - 1/1000. ELISA: 1/10000. Not yet tested in other applications.</u>
Purification :	<u>The antibody was affinity-purified from rabbit antiserum by affinity-chromatography using epitope-specific immunogen.</u>
Concentration :	<u>1 mg/ml</u>
Storage_stability	<u>-20°C/1 year</u>
:	<u></u>

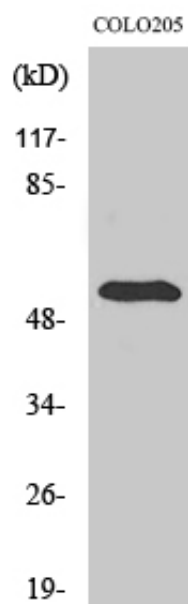


MsdS : [MSDS\\_Antibody.pdf](#)

Other\_name : STEAP3; TSAP6; Metalloreductase STEAP3; Dudulin-2; Six-transmembrane epithelial antigen of prostate 3; Tumor suppressor-activated pathway protein 6; hTSAP6; pHyde; hpHyde

Molecular Weight : 54KD

## Product Images



Western Blot analysis of various cells using pHyde Polyclonal Antibody