

PI 3-kinase p85 α Polyclonal Antibody

Catalog_no :	<u>AT3712</u>
Applications :	<u>WB,IHC-p,IF,ELISA</u>
Reactivity :	<u>Human,Mouse,Rat</u>
Category :	<u>抗原抗体</u>
Size :	<u>100μg/50μg/20μg</u>
Gene_name :	<u>PIK3R1</u>
Protein_name :	<u>Phosphatidylinositol 3-kinase regulatory subunit alpha</u>
Humangene_id :	<u>5295</u>
Humanswissprot_no :	<u>P27986</u>
Mousegene_id :	<u>18708</u>
Mouseswissprot_no :	<u>P26450</u>
Ratgene_id :	<u>25513</u>
Ratswissprot_no :	<u>Q63787</u>
Immunogen :	<u>The antiserum was produced against synthesized peptide derived from human PI3-kinase p85-alpha. AA range:573-622</u>
Specificity :	<u>PI 3-kinase p85α Polyclonal Antibody detects endogenous levels of PI 3-kinase p85α protein.</u>
Formulation :	<u>Liquid in PBS containing 50% glycerol, 0.5% BSA and 0.02% sodium azide.</u>
Source :	<u>Rabbit</u>
Dilution :	<u>Immunohistochemistry: 1/100 - 1/300. Immunofluorescence: 1/200 - 1/1000. ELISA: 1/5000. Not yet tested in other applications.</u>
Purification :	<u>The antibody was affinity-purified from rabbit antiserum by affinity-chromatography using epitope-specific immunogen.</u>
Concentration :	<u>1 mg/ml</u>
Storage_stability :	<u>-20°C/1 year</u>

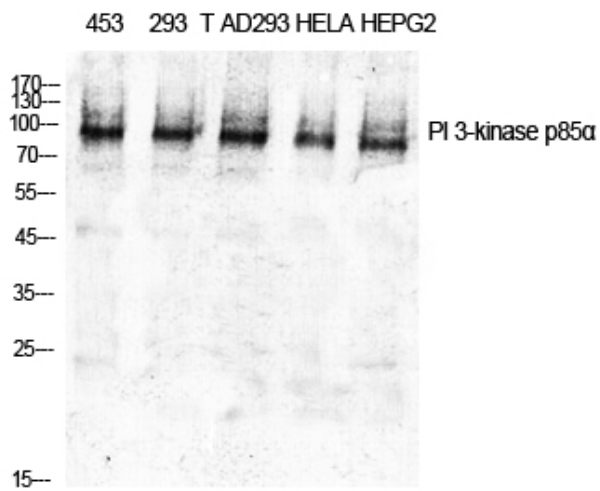


Msd : [MSDS_Antibody.pdf](#)

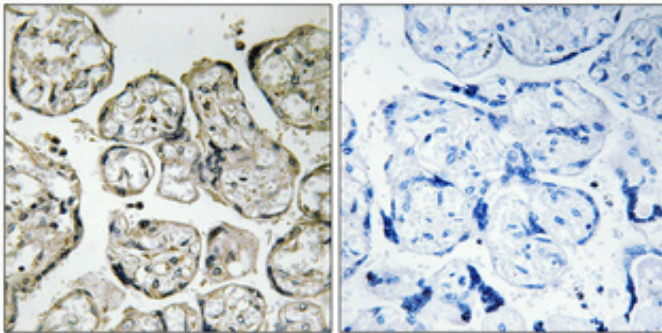
Other_name : [PIK3R1; GRB1; Phosphatidylinositol 3-kinase regulatory subunit alpha; PI3-kinase regulatory subunit alpha; PI3K regulatory subunit alpha; PtdIns-3-kinase regulatory subunit alpha; Phosphatidylinositol 3-kinase 85 kDa regulatory subunit alph](#)

Molecular Weight : [85KD](#)

Product Images



Western Blot analysis of various cells using PI 3-kinase p85α Polyclonal Antibody diluted at 1 : 1000



Immunohistochemical analysis of paraffin-embedded Human placenta. Antibody was diluted at 1:100(4°, overnight). High-pressure and temperature Tris-EDTA, pH8.0 was used for antigen retrieval. Negative control (right) obtained from antibody was pre-absorbed by immunogen peptide.