

PI 3-kinase p85 β Polyclonal Antibody

Catalog_no :	<u>AT3715</u>
Applications :	<u>WB,ELISA</u>
Reactivity :	<u>Human,Mouse,Rat</u>
Category :	<u>抗原抗体</u>
Size :	<u>100μg/50μg/20μg</u>
Gene_name :	<u>PIK3R2</u>
Protein_name :	<u>Phosphatidylinositol 3-kinase regulatory subunit beta</u>
Humangene_id	<u>5296</u>
:	
Humanswissprot	<u>O00459</u>
_no :	
Mousegene_id :	<u>18709</u>
Mouseswissprot	<u>O08908</u>
_no :	
Ratswissprot_no	<u>Q63788</u>
:	
Immunogen :	<u>The antiserum was produced against synthesized peptide derived from human PI 3-kinase p85beta. AA range:409-458</u>
Specificity :	<u>PI 3-kinase p85β Polyclonal Antibody detects endogenous levels of PI 3-kinase p85β protein.</u>
Formulation :	<u>Liquid in PBS containing 50% glycerol, 0.5% BSA and 0.02% sodium azide.</u>
Source :	<u>Rabbit</u>
Dilution :	<u>Western Blot: 1/500 - 1/2000. ELISA: 1/10000. Not yet tested in other applications.</u>
Purification :	<u>The antibody was affinity-purified from rabbit antiserum by affinity-chromatography using epitope-specific immunogen.</u>
Concentration :	<u>1 mg/ml</u>
Storage_stability	<u>-20°C/1 year</u>
:	
Msds :	<u>MSDS_Antibody.pdf</u>
Other_name :	<u>PIK3R2; Phosphatidylinositol 3-kinase regulatory subunit beta; PI3-kinase regulatory</u>

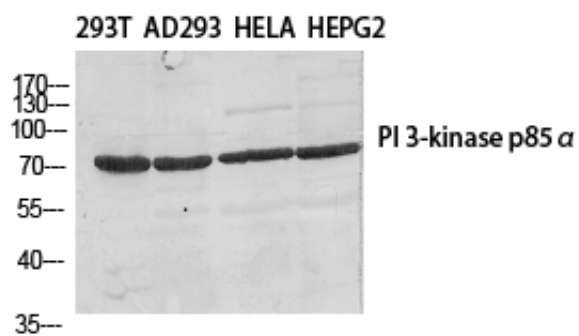


subunit beta; PI3K regulatory subunit beta; PtdIns-3-kinase regulatory subunit beta;
Phosphatidylinositol 3-kinase 85 kDa regulatory subunit beta; PI3-kina

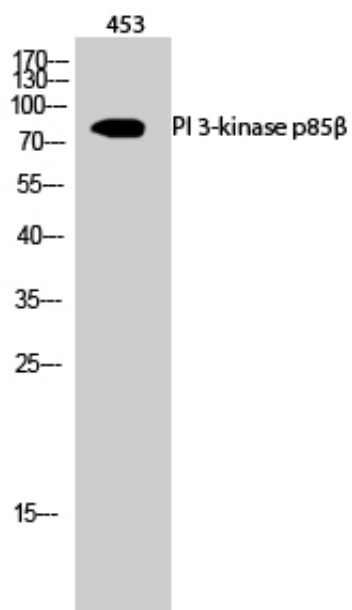
Molecular
Weight :

85KD

Product Images



Western Blot analysis of various cells using PI 3-kinase p85 β Polyclonal Antibody diluted at 1 : 500



Western Blot analysis of 453 cells using PI 3-kinase p85 β Polyclonal Antibody diluted at 1 : 500