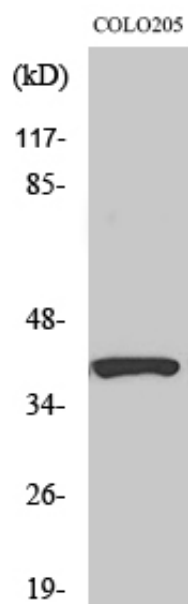


PI-9 Polyclonal Antibody

Catalog_no :	AT3716
Applications :	WB,IHC-p,ELISA
Reactivity :	Human,Mouse,Rat
Category :	抗原抗体
Size :	100µg/50µg/20µg
Gene_name :	SERPINB9
Protein_name :	Serpin B9
Humangene_id :	5272
Humanswissprot_no :	P50453
Immunogen :	The antiserum was produced against synthesized peptide derived from human SERPINB9. AA range:241-290
Specificity :	PI-9 Polyclonal Antibody detects endogenous levels of PI-9 protein.
Formulation :	Liquid in PBS containing 50% glycerol, 0.5% BSA and 0.02% sodium azide.
Source :	Rabbit
Dilution :	Western Blot: 1/500 - 1/2000. Immunohistochemistry: 1/100 - 1/300. ELISA: 1/20000. Not yet tested in other applications.
Purification :	The antibody was affinity-purified from rabbit antiserum by affinity-chromatography using epitope-specific immunogen.
Concentration :	1 mg/ml
Storage_stability :	-20°C/1 year
Msds :	MSDS_Antibody.pdf
Other_name :	SERPINB9; PI9; Serpin B9; Cytoplasmic antiproteinase 3; CAP-3; CAP3; Peptidase inhibitor 9; PI-9
Molecular Weight :	40KD

Product Images



Western Blot analysis of various cells using PI-9 Polyclonal Antibody diluted at 1 : 1000