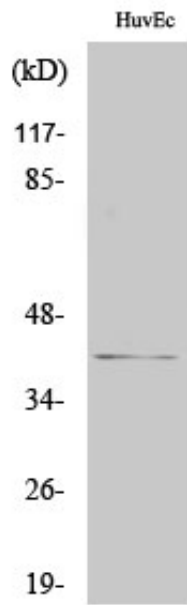


## pICln Polyclonal Antibody

Catalog_no :	AT3721
Applications :	WB,ELISA
Reactivity :	Human
Category :	抗原抗体
Size :	100µg/50µg/20µg
Gene_name :	CLNS1A
Protein_name :	Methylosome subunit pICln
Humangene_id :	<a href="#">1207</a>
Humanswissprot_no :	<a href="#">P54105</a>
Immunogen :	The antiserum was produced against synthesized peptide derived from human CLNS1A. AA range:184-233
Specificity :	pICln Polyclonal Antibody detects endogenous levels of pICln protein.
Formulation :	Liquid in PBS containing 50% glycerol, 0.5% BSA and 0.02% sodium azide.
Source :	Rabbit
Dilution :	Western Blot: 1/500 - 1/2000. ELISA: 1/5000. Not yet tested in other applications.
Purification :	The antibody was affinity-purified from rabbit antiserum by affinity-chromatography using epitope-specific immunogen.
Concentration :	1 mg/ml
Storage_stability :	-20°C/1 year
Msds :	MSDS_Antibody.pdf
Other_name :	CLNS1A; CLCI; ICLN; Methylosome subunit pICln; Chloride channel; nucleotide sensitive 1A; Chloride conductance regulatory protein ICLN; I(Cln); Chloride ion current inducer protein; ClCI; Reticulocyte pICln
Molecular Weight :	37KD

## Product Images



Western Blot analysis of various cells using pICln Polyclonal Antibody