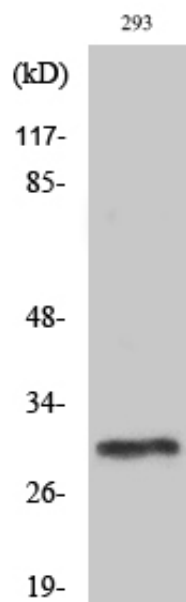




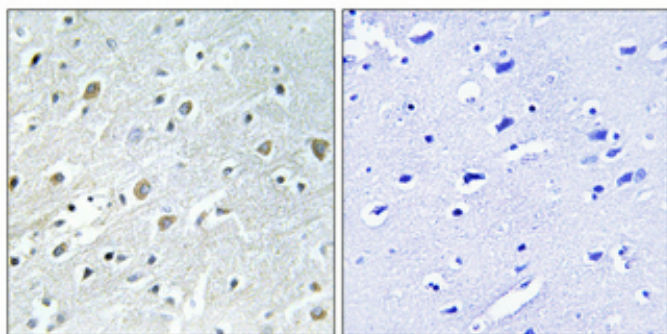
## PIG-X Polyclonal Antibody

Catalog_no :	AT3726
Applications :	WB,IHC-p,ELISA
Reactivity :	Human
Category :	抗原抗体
Size :	100µg/50µg/20µg
Gene_name :	PIGX
Protein_name :	Phosphatidylinositol-glycan biosynthesis class X protein
Humangene_id :	<a href="#">54965</a>
Humanswissprot_no :	<a href="#">Q8TBF5</a>
Immunogen :	The antiserum was produced against synthesized peptide derived from human PIGX. AA range:183-232
Specificity :	PIG-X Polyclonal Antibody detects endogenous levels of PIG-X protein.
Formulation :	Liquid in PBS containing 50% glycerol, 0.5% BSA and 0.02% sodium azide.
Source :	Rabbit
Dilution :	Western Blot: 1/500 - 1/2000. Immunohistochemistry: 1/100 - 1/300. ELISA: 1/40000. Not yet tested in other applications.
Purification :	The antibody was affinity-purified from rabbit antiserum by affinity-chromatography using epitope-specific immunogen.
Concentration :	1 mg/ml
Storage_stability :	-20°C/1 year
Msds :	MSDS_Antibody.pdf
Other_name :	PIGX; Phosphatidylinositol-glycan biosynthesis class X protein; PIG-X
Molecular Weight :	26KD

## Product Images



Western Blot analysis of various cells using PIG-X Polyclonal Antibody diluted at 1 : 1000



Immunohistochemical analysis of paraffin-embedded Human brain. Antibody was diluted at 1:100(4°,overnight). High-pressure and temperature Tris-EDTA,pH8.0 was used for antigen retrieval. Negative contrl (right) obtaned from antibody was pre-absorbed by immunogen peptide.