

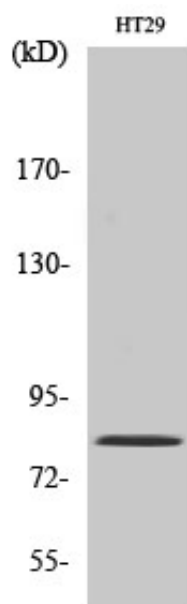
Pinin Polyclonal Antibody

Catalog_no :	<u>AT3731</u>
Applications :	<u>WB,ELISA</u>
Reactivity :	<u>Human,Mouse</u>
Category :	<u>抗原抗体</u>
Size :	<u>100µg/50µg/20µg</u>
Gene_name :	<u>PNN</u>
Protein_name :	<u>Pinin</u>
Humangene_id :	<u>5411</u>
Humanswissprot_no :	<u>Q9H307</u>
Mousegene_id :	<u>18949</u>
Mouseswissprot_no :	<u>O35691</u>
Immunogen :	<u>The antiserum was produced against synthesized peptide derived from human PNN. AA range:211-260</u>
Specificity :	<u>Pinin Polyclonal Antibody detects endogenous levels of Pinin protein.</u>
Formulation :	<u>Liquid in PBS containing 50% glycerol, 0.5% BSA and 0.02% sodium azide.</u>
Source :	<u>Rabbit</u>
Dilution :	<u>Western Blot: 1/500 - 1/2000. ELISA: 1/20000. Not yet tested in other applications.</u>
Purification :	<u>The antibody was affinity-purified from rabbit antiserum by affinity-chromatography using epitope-specific immunogen.</u>
Concentration :	<u>1 mg/ml</u>
Storage_stability :	<u>-20°C/1 year</u>
Msds :	<u>MSDS_Antibody.pdf</u>
Other_name :	<u>PNN; DRS; MEMA; Pinin; 140 kDa nuclear and cell adhesion-related phosphoprotein; Desmosome-associated protein; Domain-rich serine protein; DRS protein; DRSP; Melanoma metastasis clone A protein; Nuclear protein SDK3; SR-like protein</u>
Molecular	<u>85KD</u>



Weight :

Product Images



Western Blot analysis of various cells using Pinin Polyclonal Antibody